

D-BOX

SYSTEM CONFIGURATOR

USER GUIDE

TABLE OF CONTENTS

1. INTRODUCTION 3

2. BEFORE RUNNING THE SYSTEM CONFIGURATOR 4

 2.1 Haptic System Generations 4

 2.2 Haptic Actuator Positions 4

3. SOFTWARE INSTALLATION 5

4. G5 HAPTIC SYSTEM 5

 4.1 Starting the System Configurator 5

 4.2 G5 Firmware Update 5

 4.3 G5 Configuration Update 8

5. G2 & G3 HAPTIC SYSTEM 14

 5.1 Starting the System Configurator 14

 5.2 G2 & G3 Firmware Update 14

 5.3 Changing the Actuator Type (G3 Only) 17

 5.4 G2 & G3 Configuration Update 20

 5.5 G3 ACM Rearrangement 25

APPENDIX A: G5 COMMON CONFIGURATIONS (1 - 3 DOF)..... 28

APPENDIX B: G2/G3 COMMON CONFIGURATIONS (1 - 3 DOF)..... 29

1. INTRODUCTION

The D-BOX System Configurator is a free software tool used to update and configure your **G2**, **G3** or **G5** haptic systems.

Haptic system users can use the System Configurator to:

- Update the firmware of your KCU-IP (**G2 & G3**), Haptic Bridge (**G5**) and associated D-BOX hardware.
- Configure (or modify) your haptic system.
- Change the Main – Secondary ACMs arrangement (**G3 Only**).



If you require a reconfiguration on your **G1** haptic system, please contact our support team.

D-BOX Support

2172 rue de la Province, Longueuil, Quebec, Canada

BY EMAIL: support@d-box.com

BY PHONE 1-800-442-3269; 931 (toll free CAN/US)
1-450-442-3003; 931 (other regions)



2. BEFORE RUNNING THE SYSTEM CONFIGURATOR

2.1 Haptic System Generations

For **G2 & G3** haptic systems, each ACM holds a programming specific to its actuator’s configuration (firmware + programming).

For **G5** haptic systems, firmware & programming are applied to the Haptic Bridge and Haptic Actuators:



| Name | ACM-II | ACM-II | ACM-G3 | G5 Haptic System |
|--------------------------|------------------|--------|------------------|------------------|
| Generation | G2 | G2 | G3 | G5 |
| Stroke | 1.5in, 3in & 6in | 6in | 1.5in, 3in & 6in | 1.5in |
| Max. Number of Actuators | 3 | 2 | 2 | 4 |

2.2 Haptic Actuator Positions

The logo used to represent the actuator positions is a man sitting on a sofa (top view). The following figure describes the characters used to define the actuator positions:

| LEGEND | POSITION | PICTOGRAM REFERENCE |
|--------|--------------|---------------------|
| FL | Front-Left | |
| FC | Front-Center | |
| FR | Front-Right | |
| BL | Back-Left | |
| BC | Back-Center | |
| BR | Back-Right | |
| SU | Surge | |
| SW | Sway | |
| Y | Yaw | |

3. SOFTWARE INSTALLATION

The D-BOX System Configurator is compatible with **Microsoft Windows 7, 8, 10 & 11 – 64 bits**.

STEP 1: Make sure you have the latest version of D-BOX Motion Core installed on your PC before installing and running the D-BOX System Configurator. Download, extract and install (**Setup.exe**) the D-BOX Motion Core package is available at: <https://www.d-box.com/en/software-downloads>

STEP 2: Download, extract and install (**Setup.exe**) the D-BOX System Configurator package available at: <https://www.d-box.com/en/software-downloads>

4. G5 HAPTIC SYSTEM

4.1 Starting the System Configurator



Do not interrupt the update process while it is running. Interrupting the update process before it is completed may cause improper operation.

STEP 1: Connect the hardware to your computer. See your haptic system user guide if necessary: [D-BOX G5 Installation, User & Troubleshooting Guide](#)

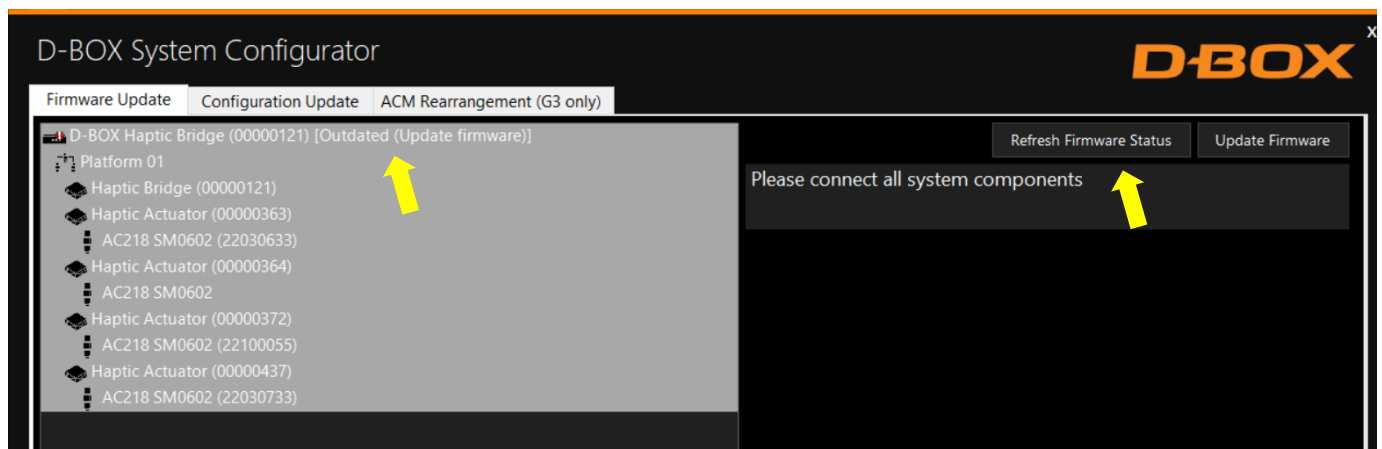
STEP 2: Start the D-BOX System Configurator from the Windows Start menu/D-BOX folder.

NOTE: Running the software requires administrative privileges.




4.2 G5 Firmware Update

The Firmware update tab is the active tab when you start the application. This tab allows you to update the firmware of the Haptic Bridge and Haptic Actuators.

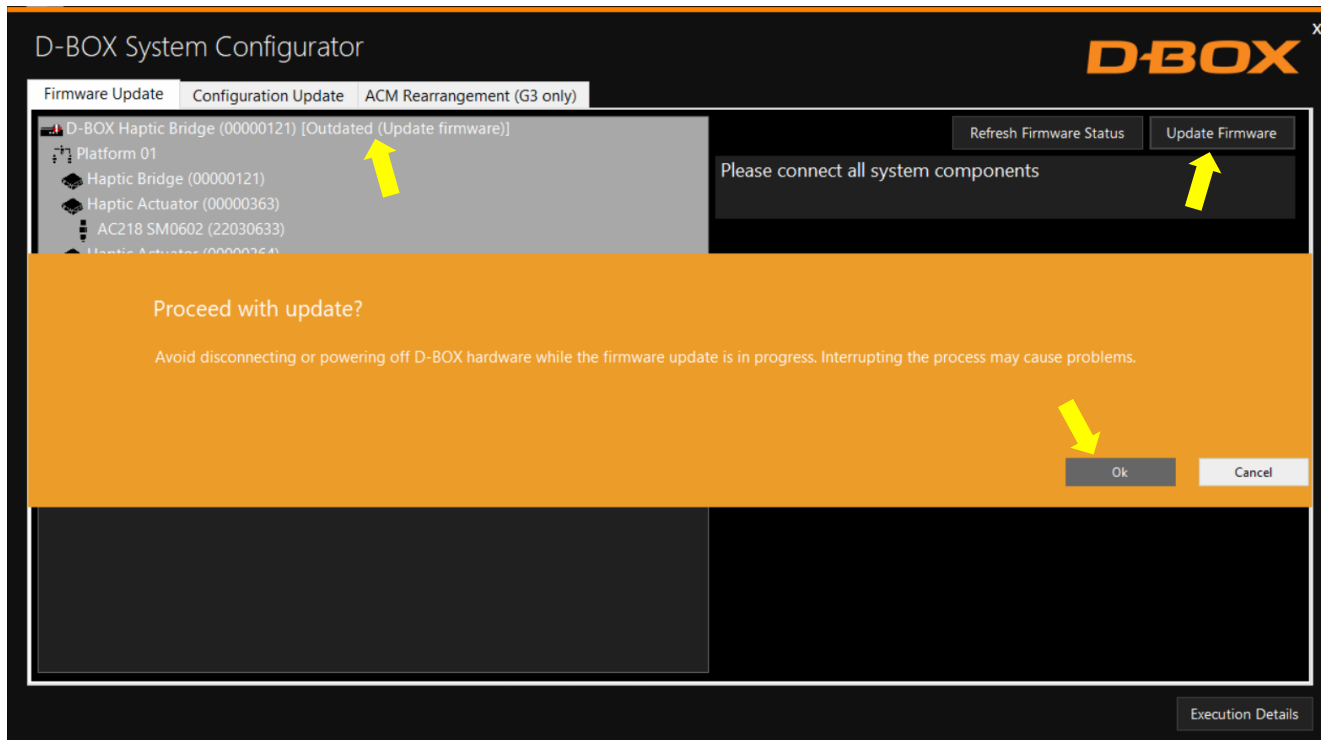
STEP 1: Click the **Refresh Firmware Status** button. This action refreshes the status of the firmware and updates the status to outdated (if a newer firmware is available) or up to date (if the latest firmware is already in use):



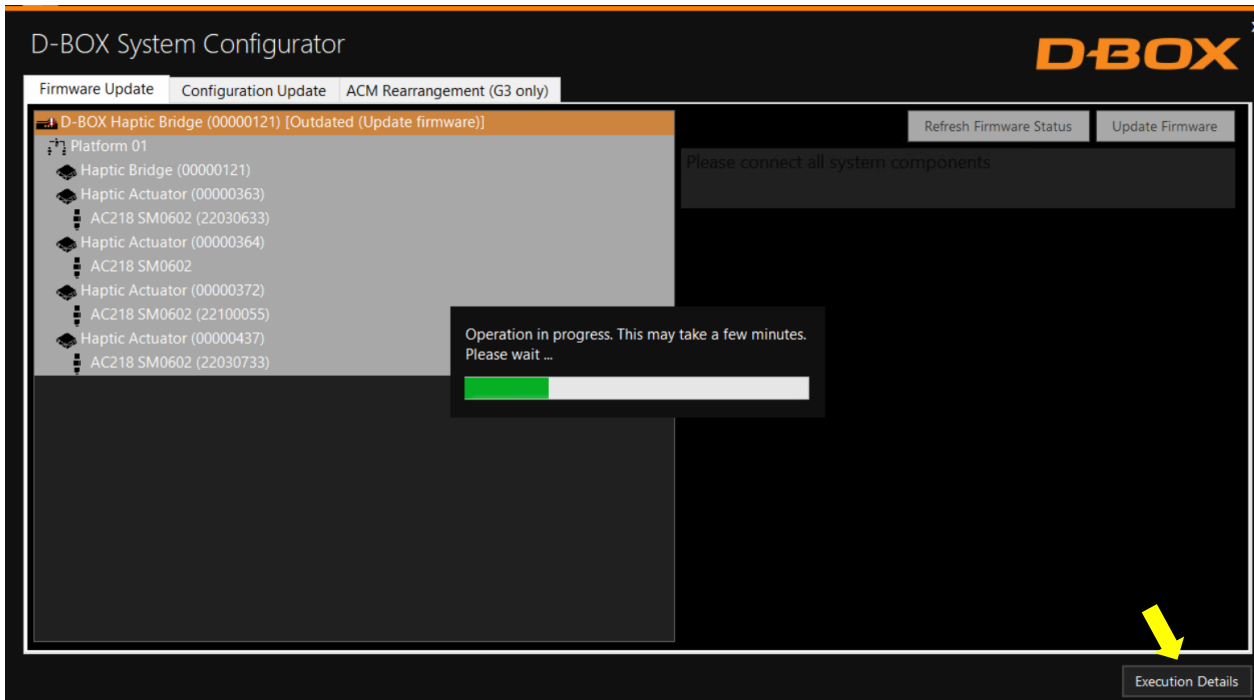
The device icon displays its status. The possible values are:

| Device Icon | Status | Action required |
|-----------------------------------------------------------------------------------|-------------------------------------|-------------------------------------------------------------------------------------|
|  | Unknown: Refresh firmware status | Initial status. Refresh the status using the Refresh Firmware Status button. |
|  | Outdated firmware should be updated | A newer firmware is available. Update firmware by using the Update Firmware button. |
|  | Up to date: No action required | The latest firmware is installed. No action required. |

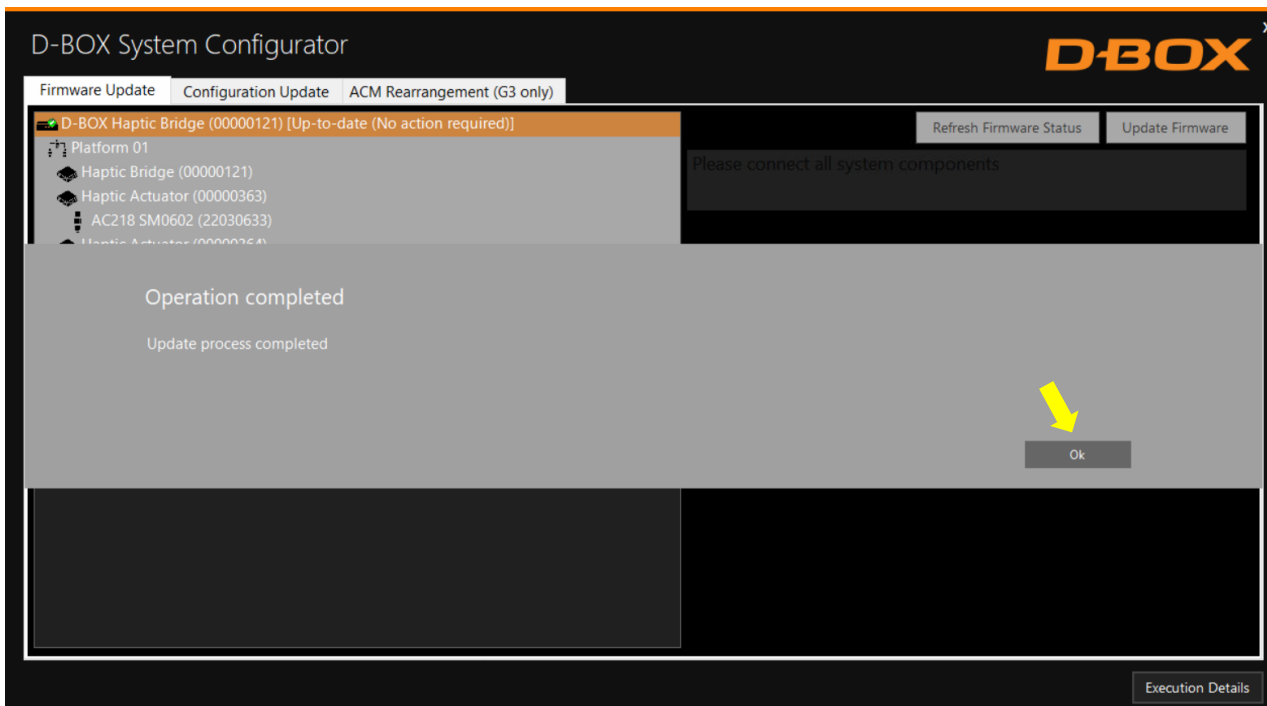
STEP 2: If your components are outdated, select the Haptic Bridge then press the **Update Firmware** button. A dialog box will appear asking you if you want to proceed with update. Click **OK**:



NOTE: The update process may take a few minutes. You can click the **Execution Details** button at any time to read details about the ongoing operation:



Once the update process is complete, the following window will appear. Click **OK**:



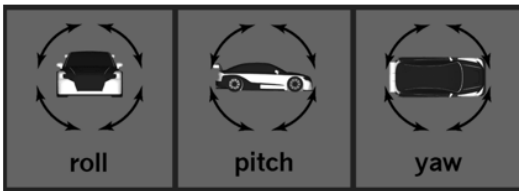
Your firmware is now up to date!

4.3 G5 Configuration Update

The **Configuration Update** tab allows you to:

- Configure your haptic system (Haptic Actuator positions and axes (Degree of Freedom - DOF))
- Change the position assigned to each actuator.
- Change the number of actuators in the configuration.

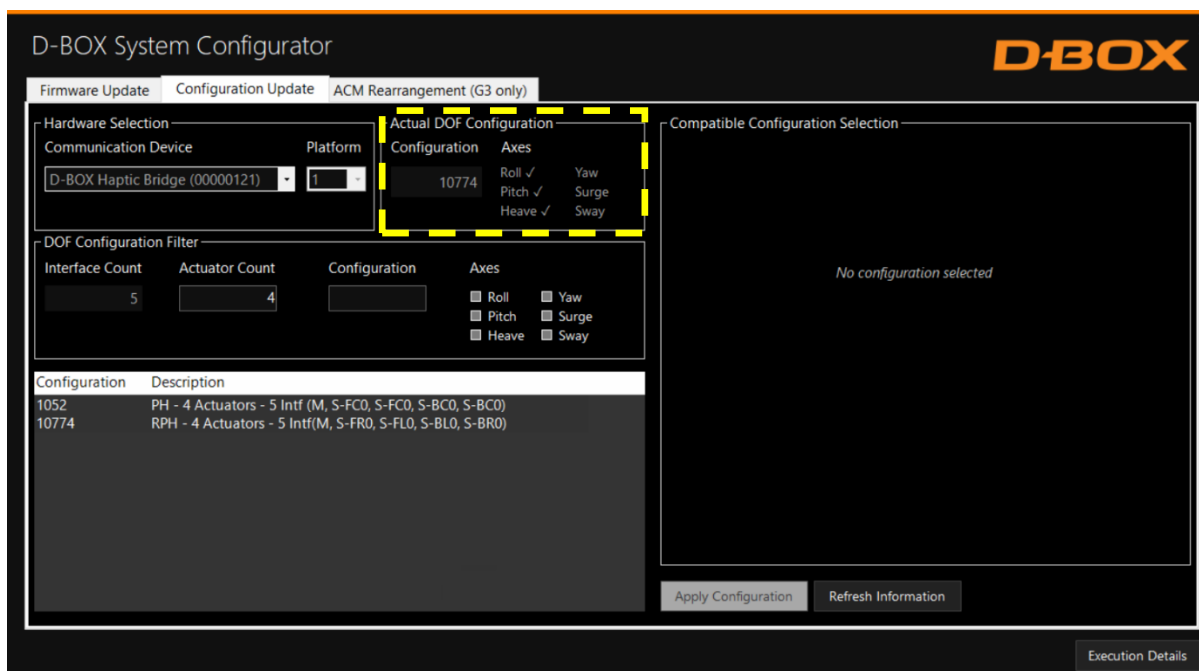
NOTE: Here are the possible axes (DOF) that can be configured for a G5 haptic system:



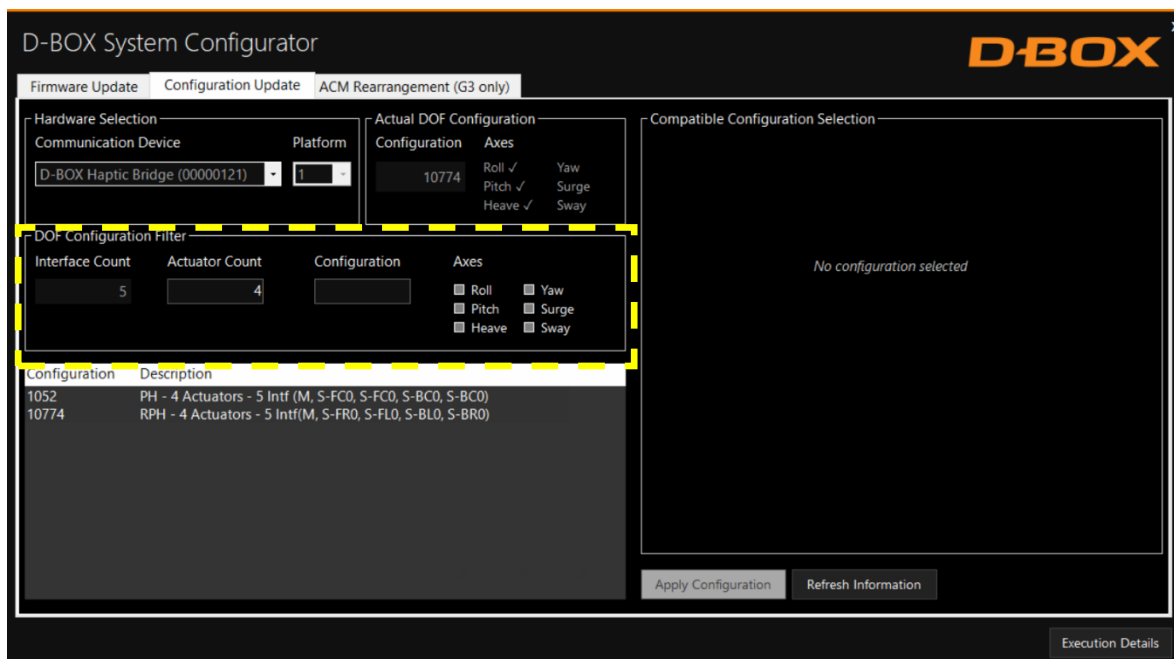
STEP 1: From the **Hardware Selection** box, select the communication device (D-BOX Haptic Bridge) linked to the haptic system you want to configure, then select the platform number:

The screenshot shows the 'D-BOX System Configurator' interface with the 'Configuration Update' tab selected. The 'Hardware Selection' section is highlighted with a dashed yellow box, showing 'D-BOX Haptic Bridge (00000121)' and platform '1'. The 'Actual DOF Configuration' shows configuration '10774' with Roll, Pitch, and Heave checked. The 'DOF Configuration Filter' shows 5 interface and 4 actuator counts. The 'Compatible Configuration Selection' area is empty, displaying 'No configuration selected'. Buttons for 'Apply Configuration' and 'Refresh Information' are visible at the bottom.

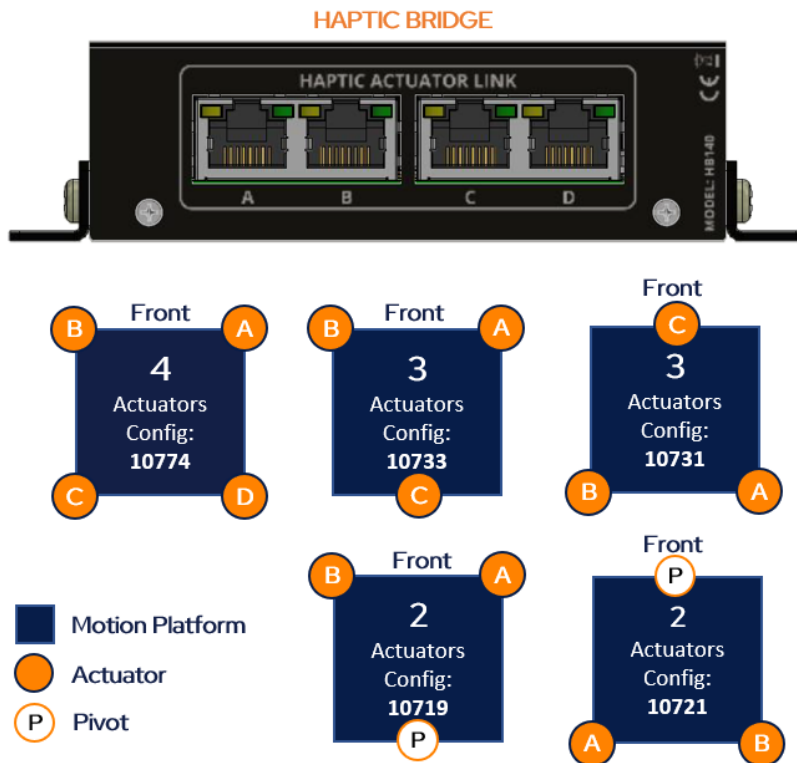
The **Actual DOF Configuration** box shows the actual configuration (may be empty for a new system). There is no selection to be done in this section:



STEP 2: The **DOF Configuration Filter** box helps you to find the available configurations for your haptic system:



OPTION A: You can manually enter the configuration # (see below) into the **Configuration** box. See Appendix A for more details:

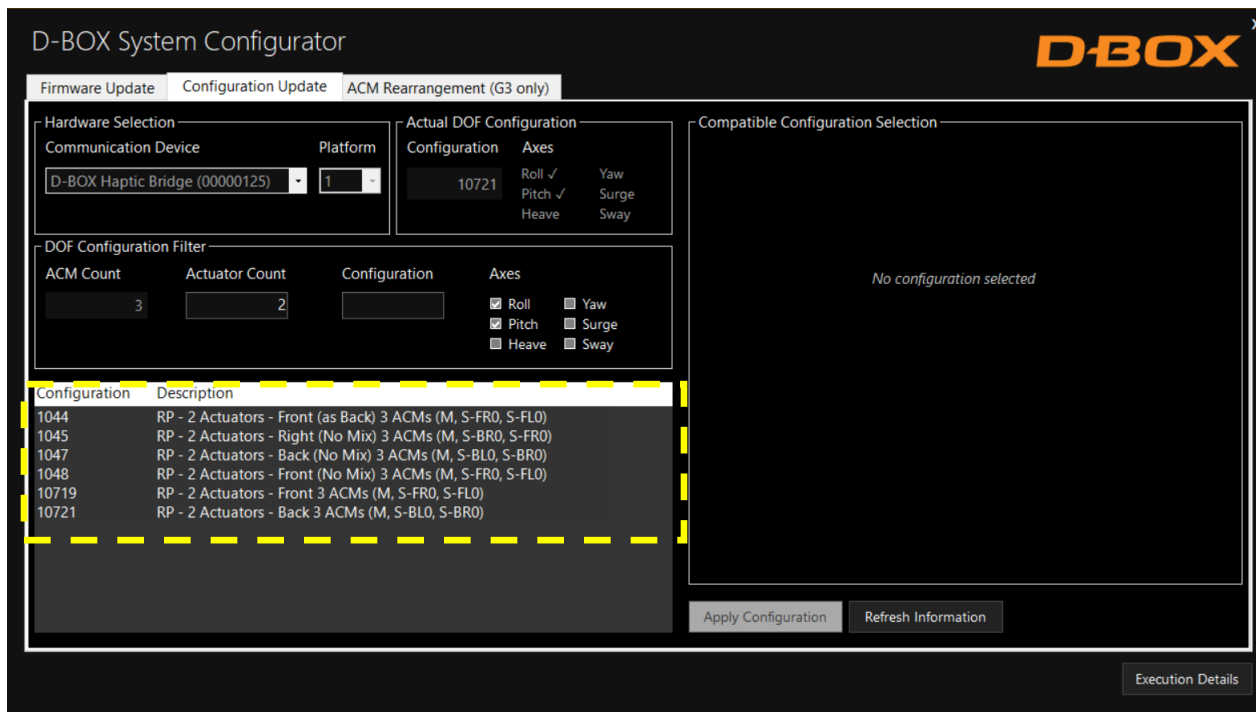


Make sure to connect each actuator RJ45 cable to the Haptic Bridge lettered as per the plan above.

OPTION B: Filter by configuration attributes (see Appendix A for common configurations):

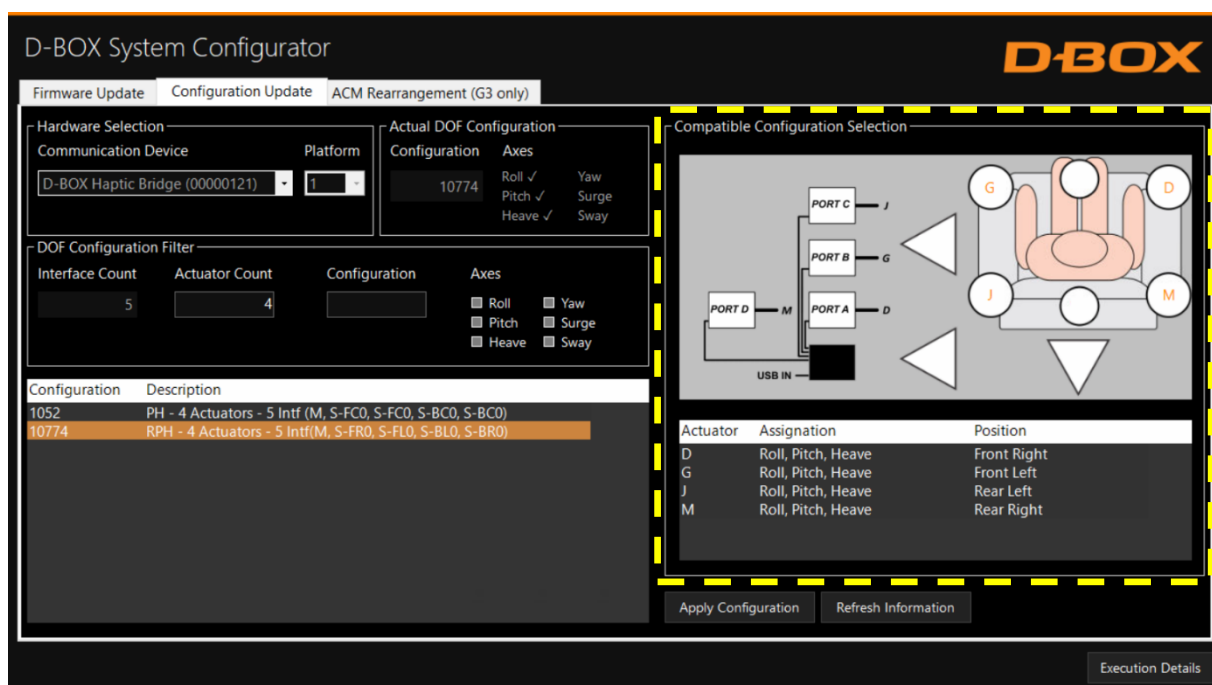
1. Validate that the number of Interface (Haptic Bridge + actuators) detected is accurate. If it is not the case, check the system connections and click on the Refresh Information button.
2. Validate that the number of actuators detected match your requested configuration. Otherwise, you can manually change the value as desired.
3. Optional: Check the boxes of the desired axes (degrees of freedom) you want.

STEP 3: The **Configuration and Description** section shows the list of all the available configurations using the information you entered in the Configuration Filter.

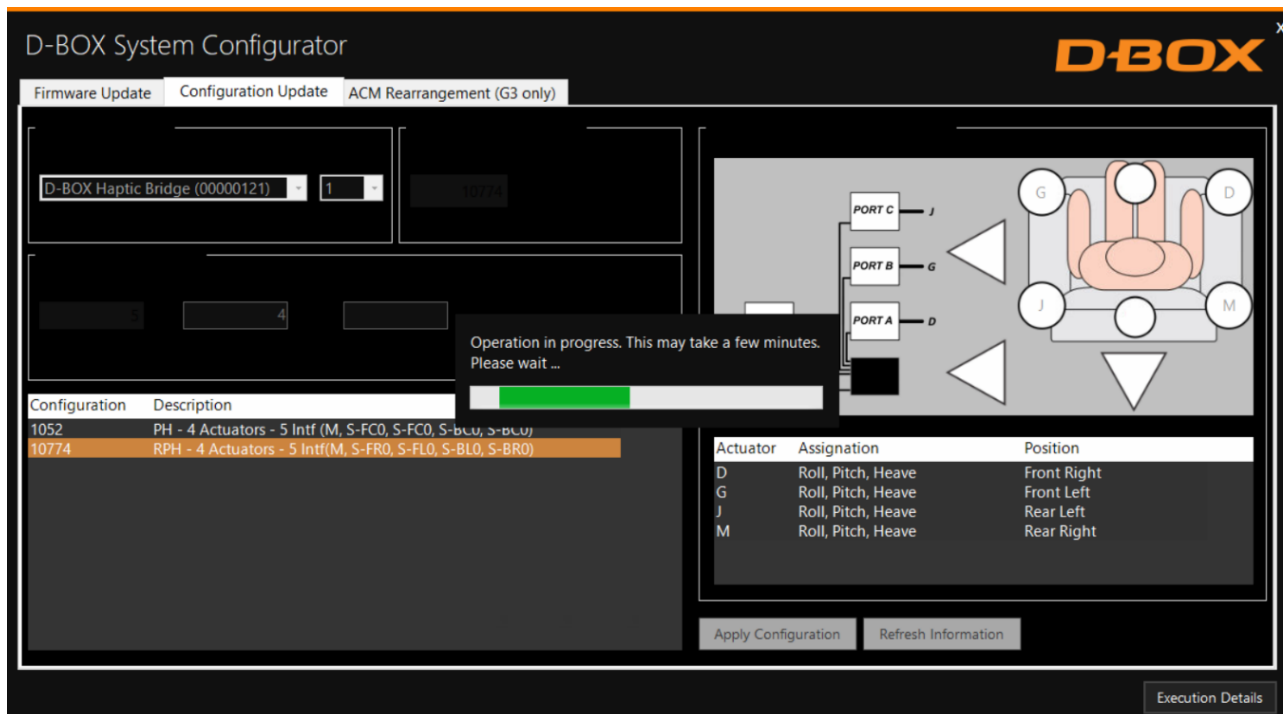
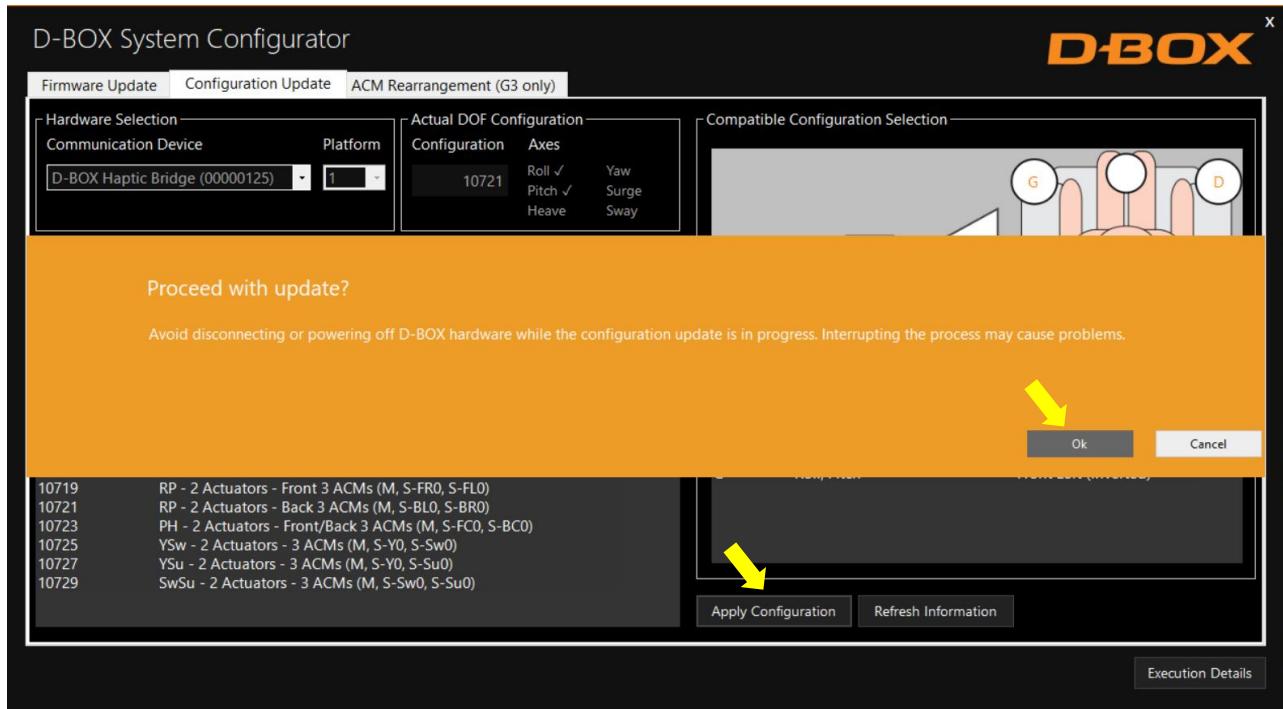


By selecting a configuration, its layout appears in the **Compatible Configuration Selection** box. The layout displays the following elements:

- The Haptic Bridge connected with their arrangement.
- The Haptic Actuator(s) connected, their assigned connection slot (Haptic Bridge).
- The Haptic Actuator(s) physical positions on the simulator, chair, or platform.



STEP 4 Once the configuration is chosen, click the **Apply Configuration** button to start the configuration update process, then follow the onscreen instructions:



Once the configuration update is complete, the following confirmation window appears. Click **OK**:



5. G2 & G3 HAPTIC SYSTEM

5.1 Starting the System Configurator



Do not interrupt the update process while it is running. Interrupting the update process before it is completed may cause improper operation.

STEP 1: Connect the hardware to your computer. See your haptic system User Guide if necessary.

[G2 Motion System Installation Guide](#)

[G3 Installation, User & Troubleshooting Guide](#)

STEP 2: Start the D-BOX System Configurator from the Windows Start menu/D-BOX folder.

NOTE: Running the software requires administrative privileges.

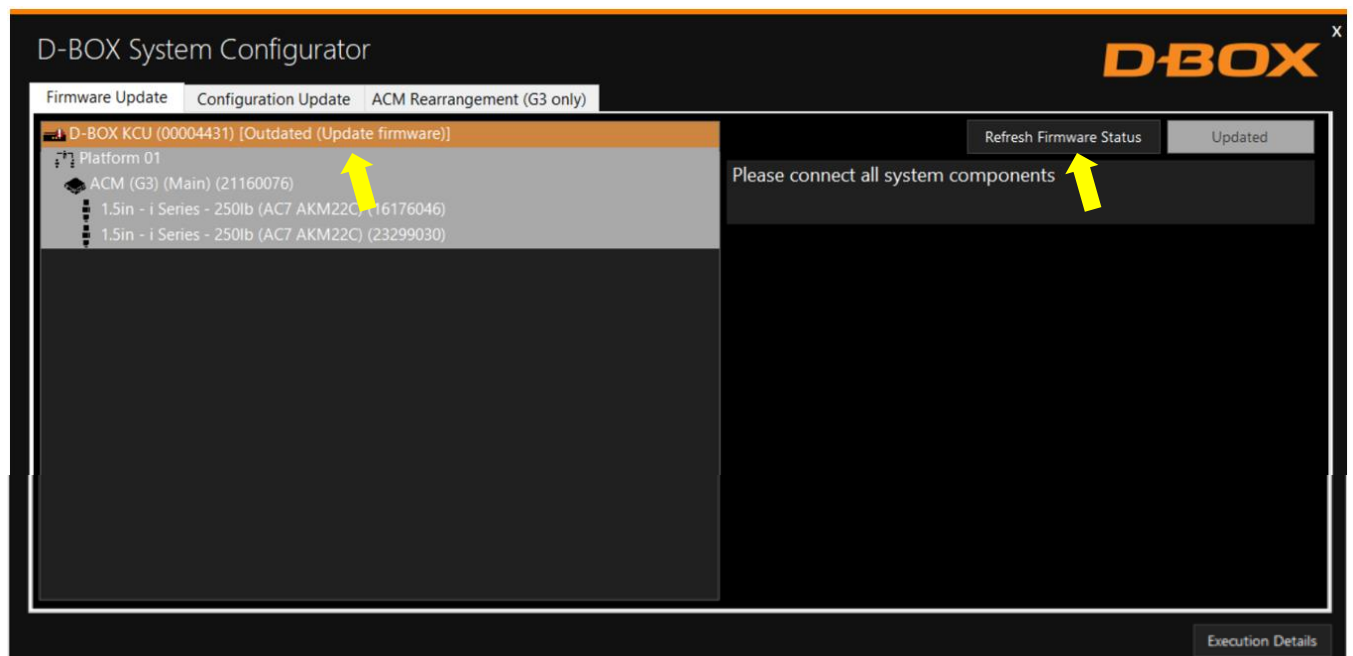
5.2 G2 & G3 Firmware Update

The Firmware update tab is the active tab when you start the application. This tab allows you to update the firmware of the **G2 & G3** ACM(s), KCU-1P, KCA & KCA-T.




A firmware update can also change the actuator model (**G3 only**). For example, if you replace 1.5-inch actuators by 3-inch actuators, you need to update the firmware. **See section 5.3 for more details.**

NOTE: Firmware update applies to a KCU-1P and all subcomponents. If you have multiple KCU-1P, you need to update them one at a time.

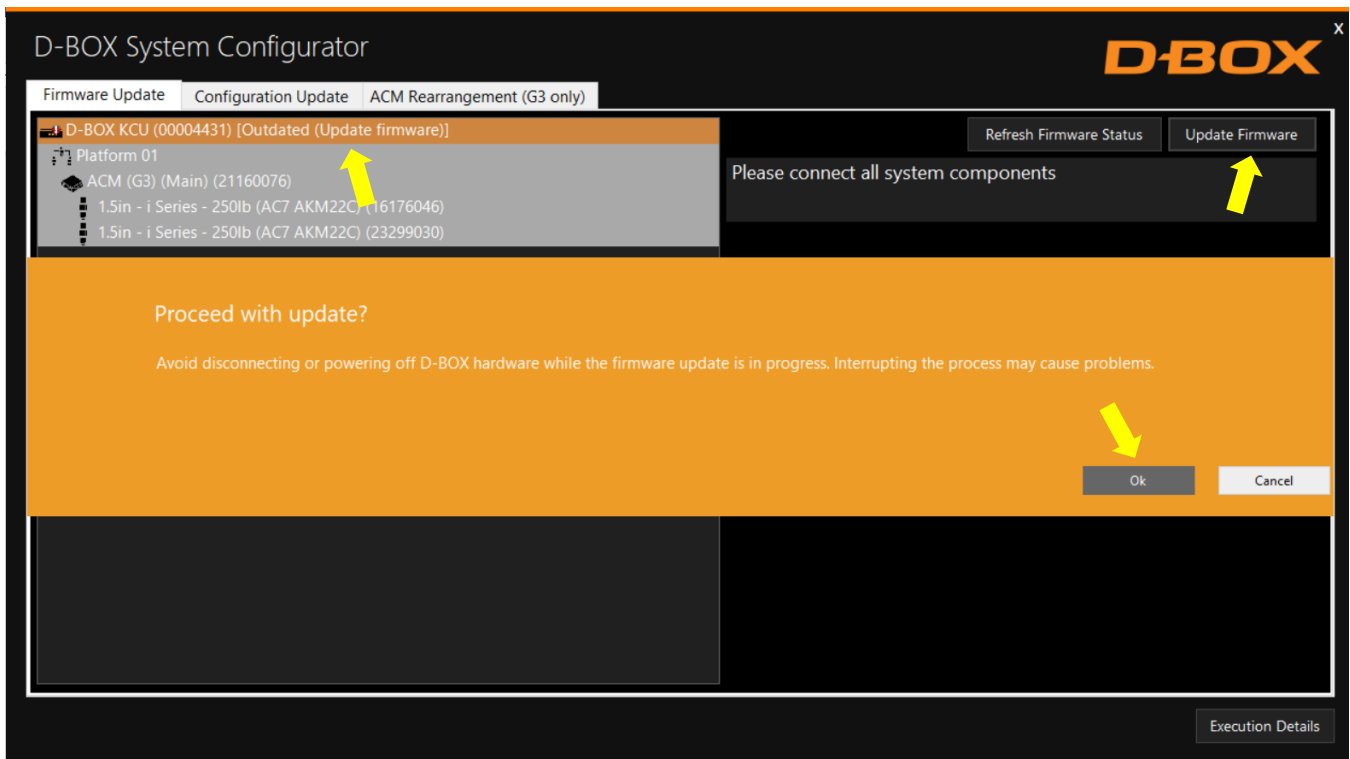
STEP 1: Click the **Refresh Firmware Status** button. This action refreshes the status of the firmware and updates the status to outdated (if a newer firmware is available) or up to date (if the latest firmware is already in use):



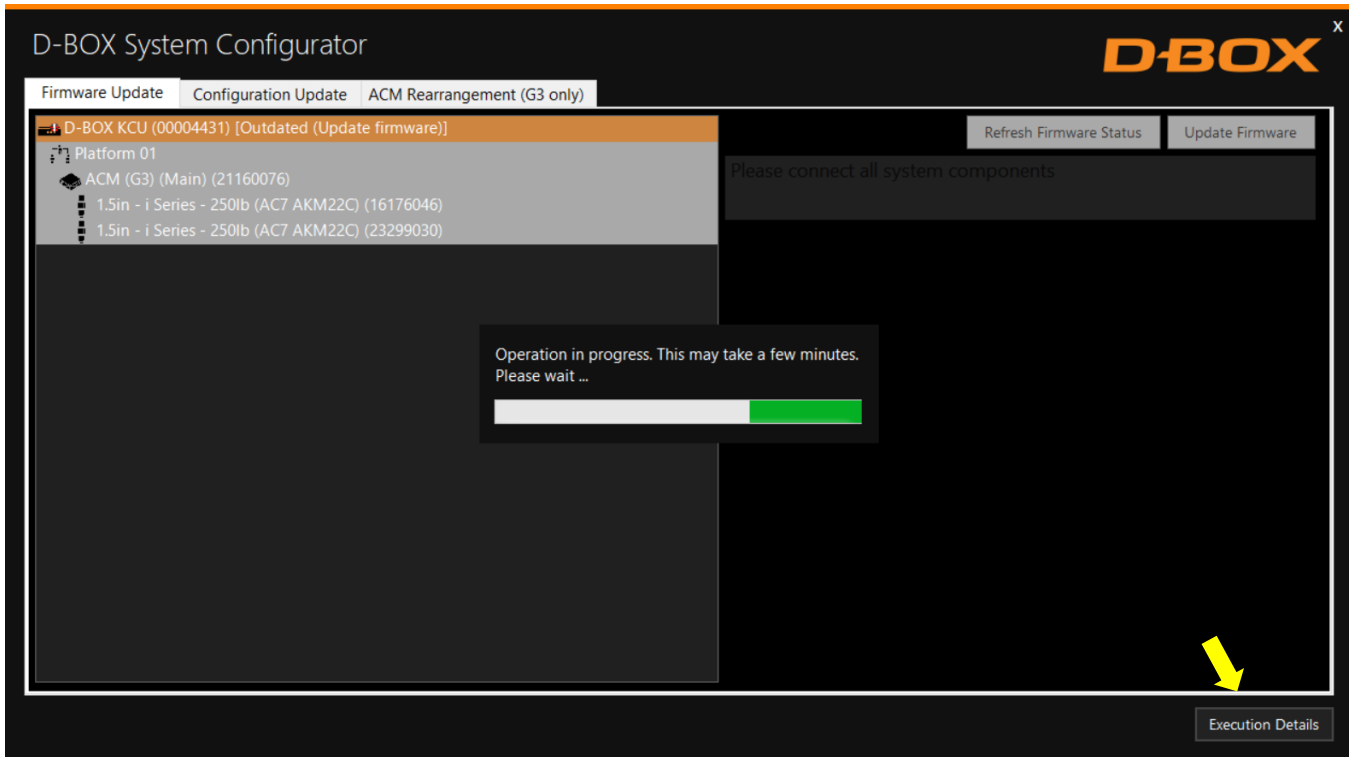
The device icon displays its status. The possible values are:

| Device Icon | Status | Action required |
|-----------------------------------------------------------------------------------|-------------------------------------|-------------------------------------------------------------------------------------|
|  | Unknown: Refresh firmware status | Initial status. Refresh the status using the Refresh Firmware Status button. |
|  | Outdated firmware should be updated | A newer firmware is available. Update firmware by using the Update Firmware button. |
|  | Up to date: No action required | The latest firmware is installed. No action required. |

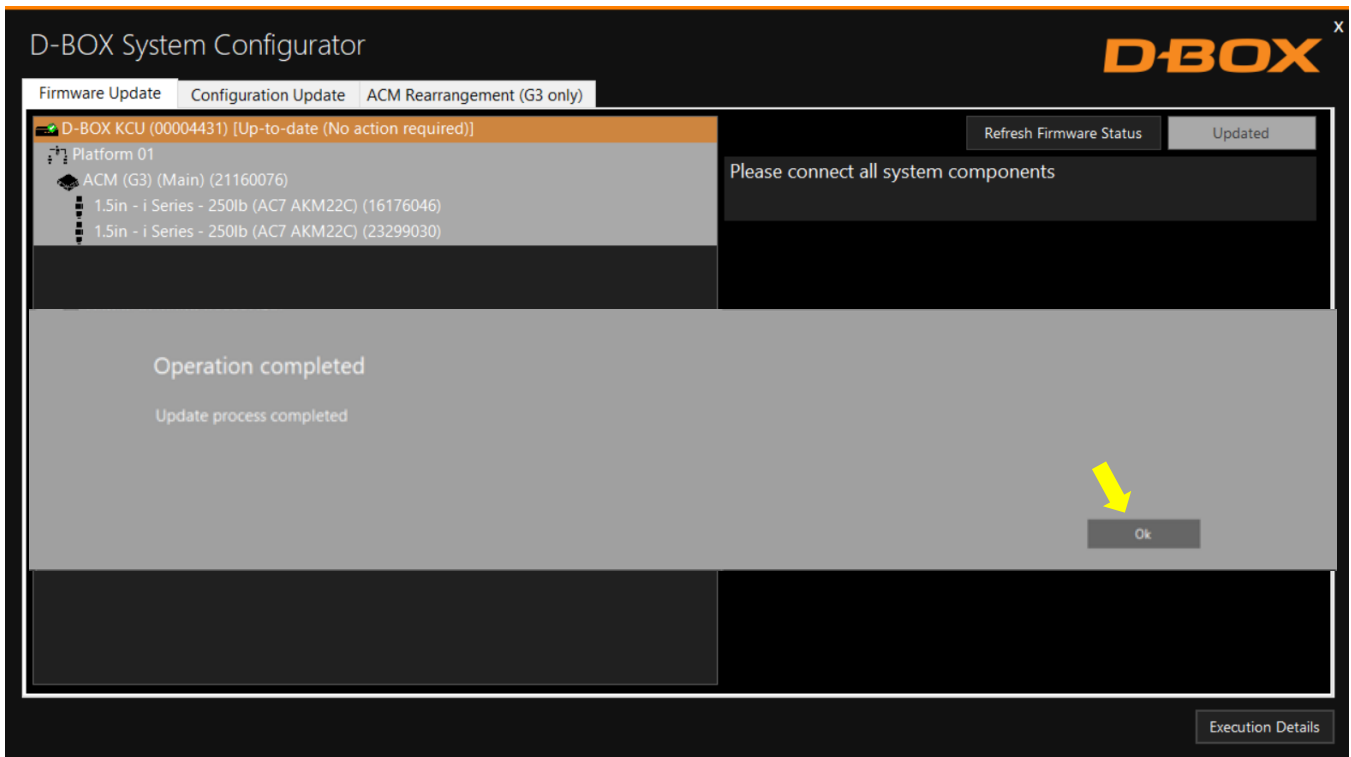
STEP 2: If your components are outdated, select the KCU-1P you want to update then press the **Update Firmware** button. A dialog box will appear asking you if you want to proceed with update. Click **OK**:



NOTE: The update process may take a few minutes. You can click the **Execution Details** button at any time to read details about the ongoing operation:



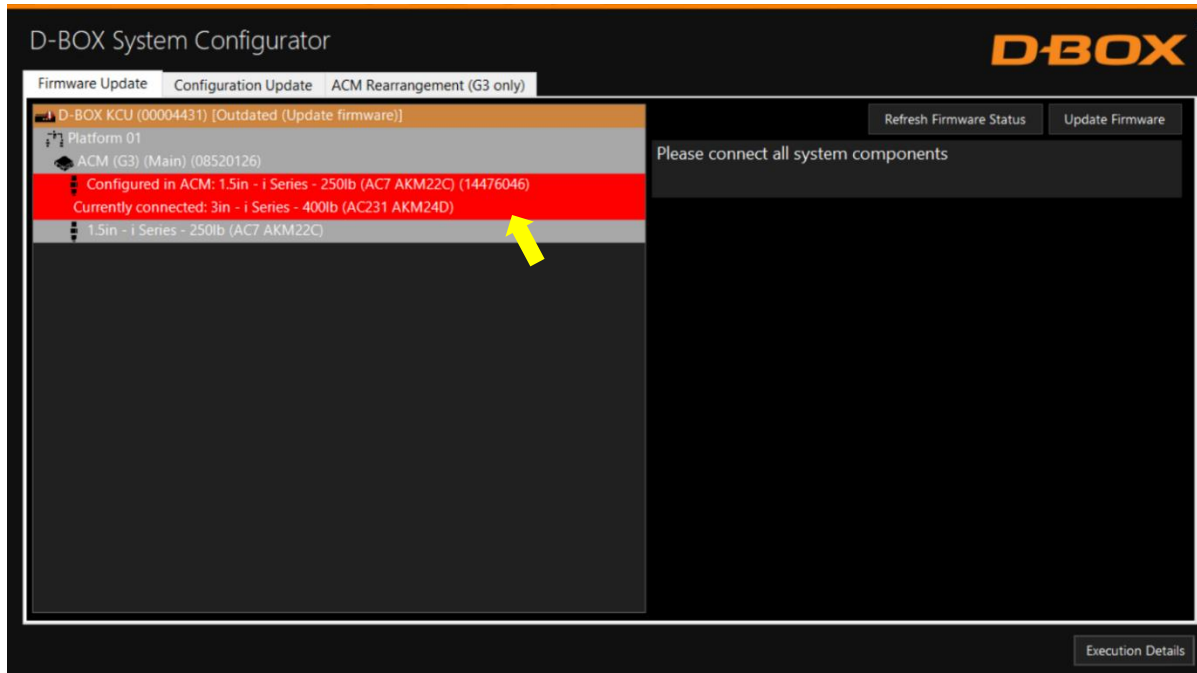
Once the update process is complete, the following window will appear. Click **OK**:



5.3 Changing the Haptic Actuator Type (G3 Only)

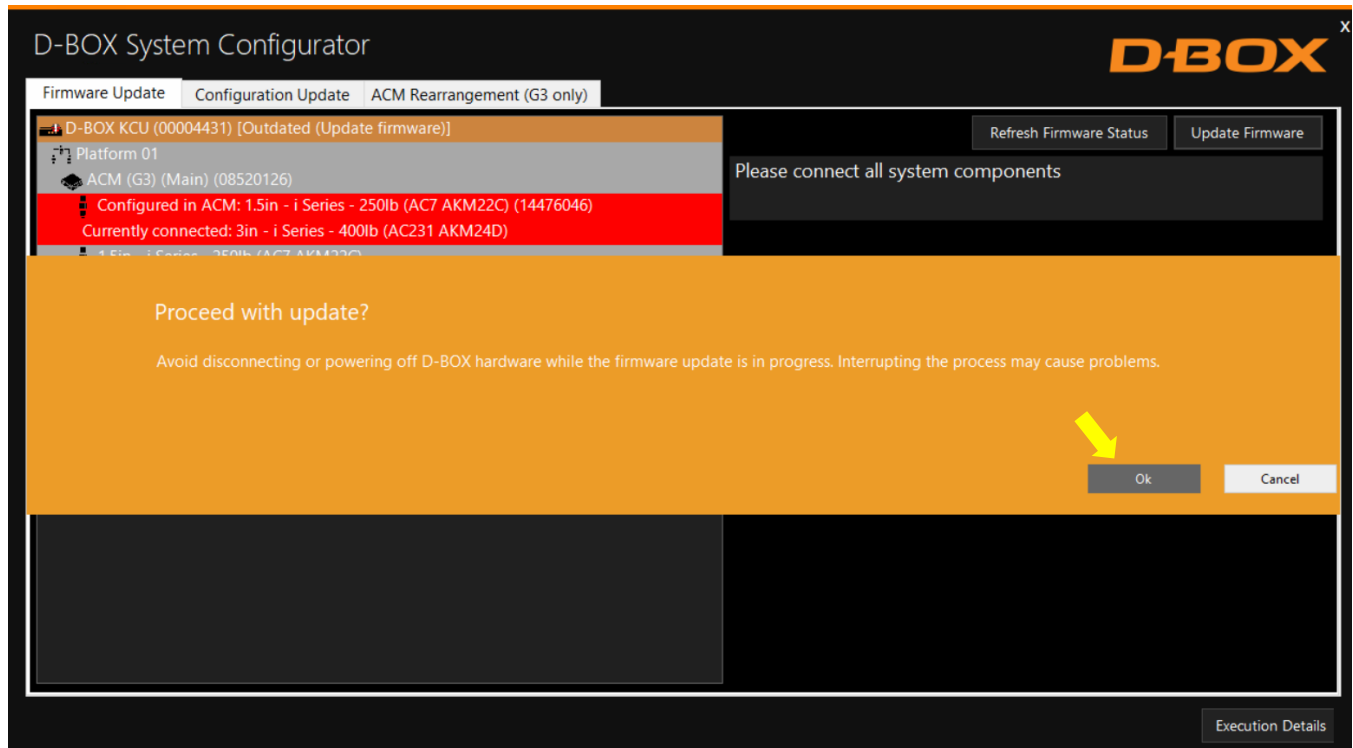
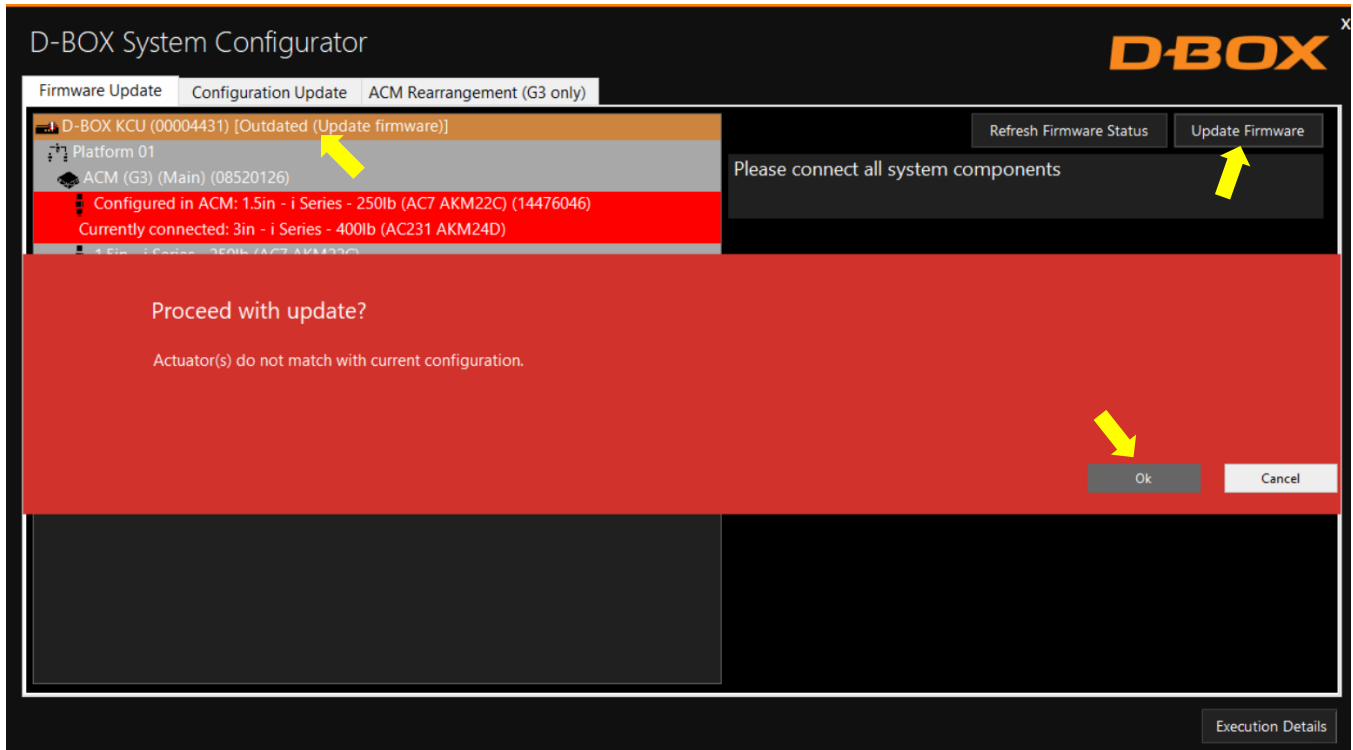
A firmware update must be performed when there is a mismatch between the configured Haptic Actuator(s) and the connected Haptic Actuator(s).

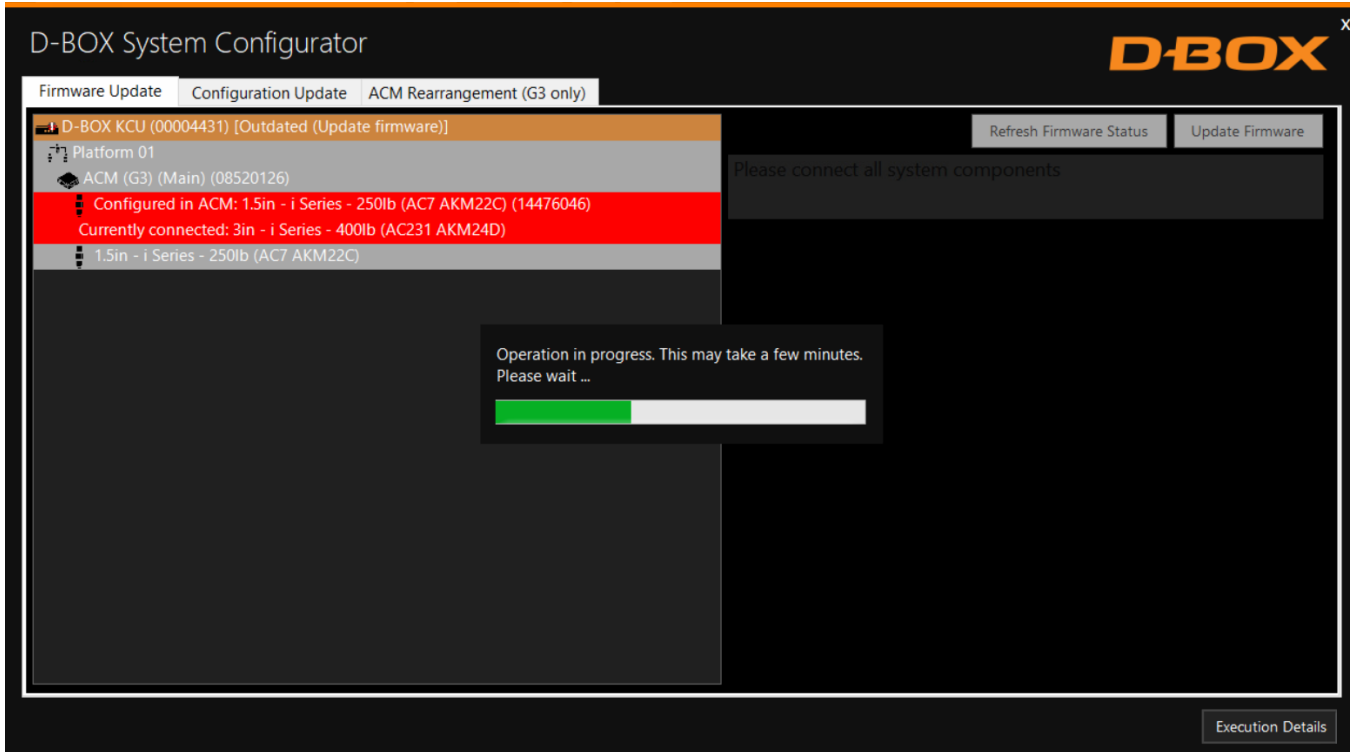
As an example, if you connect 3-inch Haptic Actuators instead of 1.5-inch Haptic Actuators, a red window appears showing the mismatch. That means the configuration is different from the old configuration for which the ACM was initially configured:



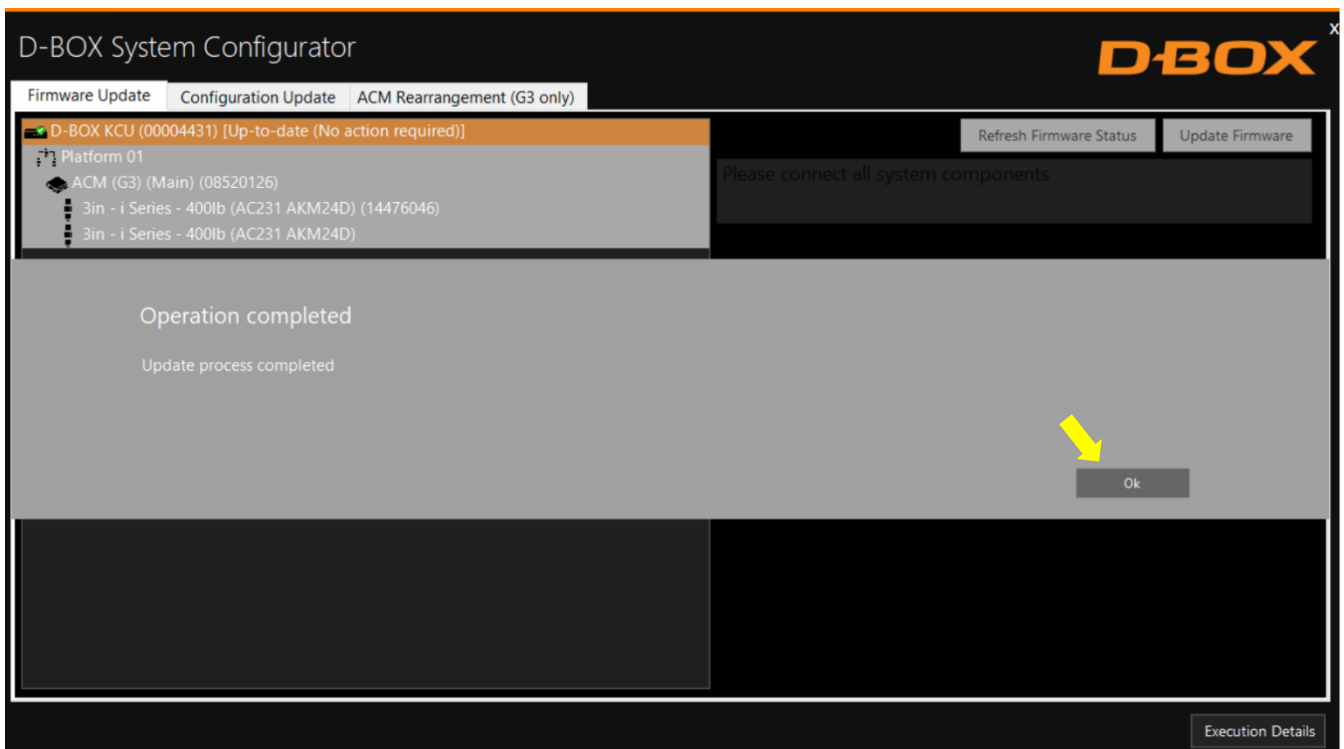
NOTE: If a G2 system is connected, you cannot use this function.

To proceed with the firmware update, select the KCU-1P device then click **Update Firmware**. Follow the onscreen instructions:





Once the operation is completed, click **OK**. Your haptic system is now up to date:

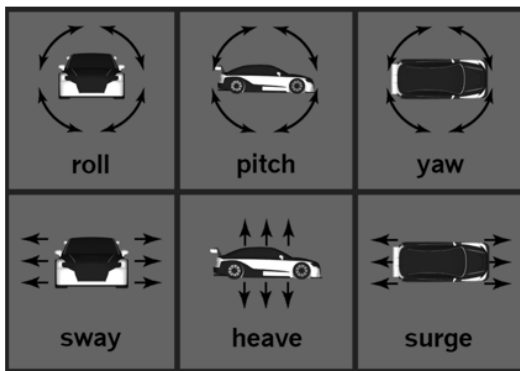


5.4 G2 & G3 Configuration Update

The **Configuration Update** tab allows you to:

- Configure your haptic system (Haptic Actuator positions and axes (Degree of Freedom - DOF))
- Change the position assigned to each actuator.
- Change the number of Haptic Actuators in the configuration.
- Modify the number of ACM in the configuration.

NOTE: Here are the possible axes (DOF) that can be configured for a D-BOX haptic system:



STEP 1: From the **Hardware Selection** box, select the communication device (KCU-1P) linked to the haptic system(s) you want to configure, then select the platform number (if multiple haptic systems are connected):

D-BOX System Configurator

Hardware Selection

Communication Device: D-BOX KCU (00004431) Platform: 1

Actual DOF Configuration

| Configuration | Roll | Pitch | Heave | Yaw | Surge | Sway |
|---------------|-------------------------------------|-------------------------------------|-------------------------------------|--------------------------|--------------------------|--------------------------|
| 10093 | <input checked="" type="checkbox"/> | <input checked="" type="checkbox"/> | <input checked="" type="checkbox"/> | <input type="checkbox"/> | <input type="checkbox"/> | <input type="checkbox"/> |

Compatible Configuration Selection

No configuration selected

DOF Configuration Filter

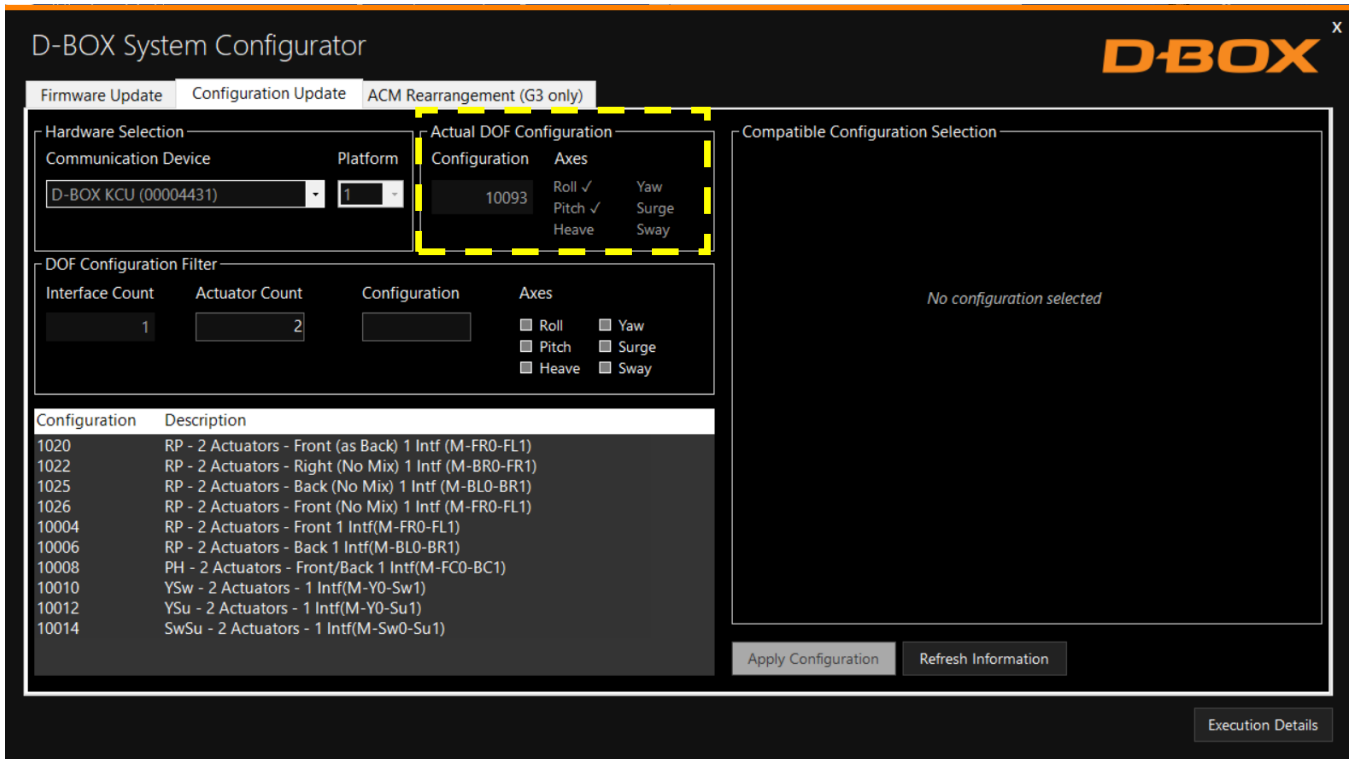
Interface Count: 1 Actuator Count: 2

Configuration: [] Axes: Roll Pitch Heave Yaw Surge Sway

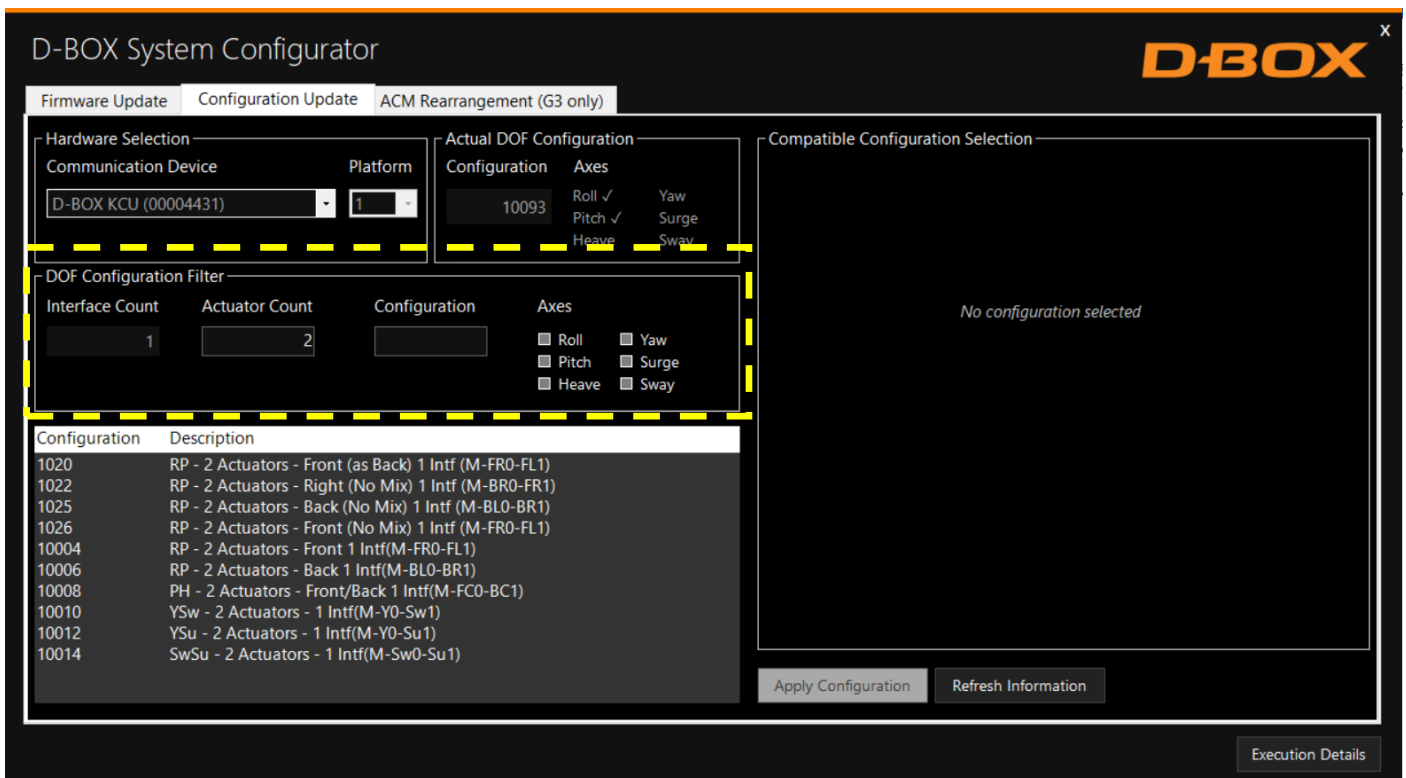
| Configuration | Description |
|---------------|-------------------------------------------------------|
| 1020 | RP - 2 Actuators - Front (as Back) 1 Intf (M-FR0-FL1) |
| 1022 | RP - 2 Actuators - Right (No Mix) 1 Intf (M-BR0-FR1) |
| 1025 | RP - 2 Actuators - Back (No Mix) 1 Intf (M-BL0-BR1) |
| 1026 | RP - 2 Actuators - Front (No Mix) 1 Intf (M-FR0-FL1) |
| 10004 | RP - 2 Actuators - Front 1 Intf(M-FR0-FL1) |
| 10006 | RP - 2 Actuators - Back 1 Intf(M-BL0-BR1) |
| 10008 | PH - 2 Actuators - Front/Back 1 Intf(M-FC0-BC1) |
| 10010 | YSw - 2 Actuators - 1 Intf(M-Y0-Sw1) |
| 10012 | YSu - 2 Actuators - 1 Intf(M-Y0-Su1) |
| 10014 | SwSu - 2 Actuators - 1 Intf(M-Sw0-Su1) |

Buttons: Apply Configuration, Refresh Information, Execution Details

The **Actual DOF Configuration** box shows the actual configuration. There is no selection to be done in this section:



STEP 2: The **DOF Configuration Filter** box helps you to find the available configurations for your haptic system:



OPTION A: If you know the number of the configuration, you can select it from the list then proceed with the programming (see Appendix B for common configurations)

OPTION B: Filter by configuration attributes (see Appendix B for common configurations):

4. Validate that the number of ACMs detected is accurate. If it is not the case, check the system connections and click on the Refresh Information button.
5. Validate that the number of actuators detected match your requested configuration. Otherwise, you can manually change the value as desired.
6. Optional: Check the boxes of the desired axes (degrees of freedom) you want.

STEP 3: The **Configuration and Description** section shows the list of all the available configurations using the information you entered in the Configuration Filter:

The screenshot displays the 'D-BOX System Configurator' interface. At the top, there are tabs for 'Firmware Update', 'Configuration Update', and 'ACM Rearrangement (G3 only)'. The 'Configuration Update' tab is active.

Hardware Selection: Includes a 'Communication Device' dropdown set to 'D-BOX KCU (00004431)' and a 'Platform' dropdown set to '1'.

Actual DOF Configuration: Shows 'Configuration' as '10093' and 'Axes' with checkboxes for Roll (checked), Pitch (checked), Heave, Yaw, Surge, and Sway.

DOF Configuration Filter: Includes 'Interface Count' (1), 'Actuator Count' (2), and 'Configuration' (empty). The 'Axes' section has checkboxes for Roll (checked), Pitch (checked), Heave, Yaw, Surge, and Sway.

Compatible Configuration Selection: A large empty area with the text 'No configuration selected'.

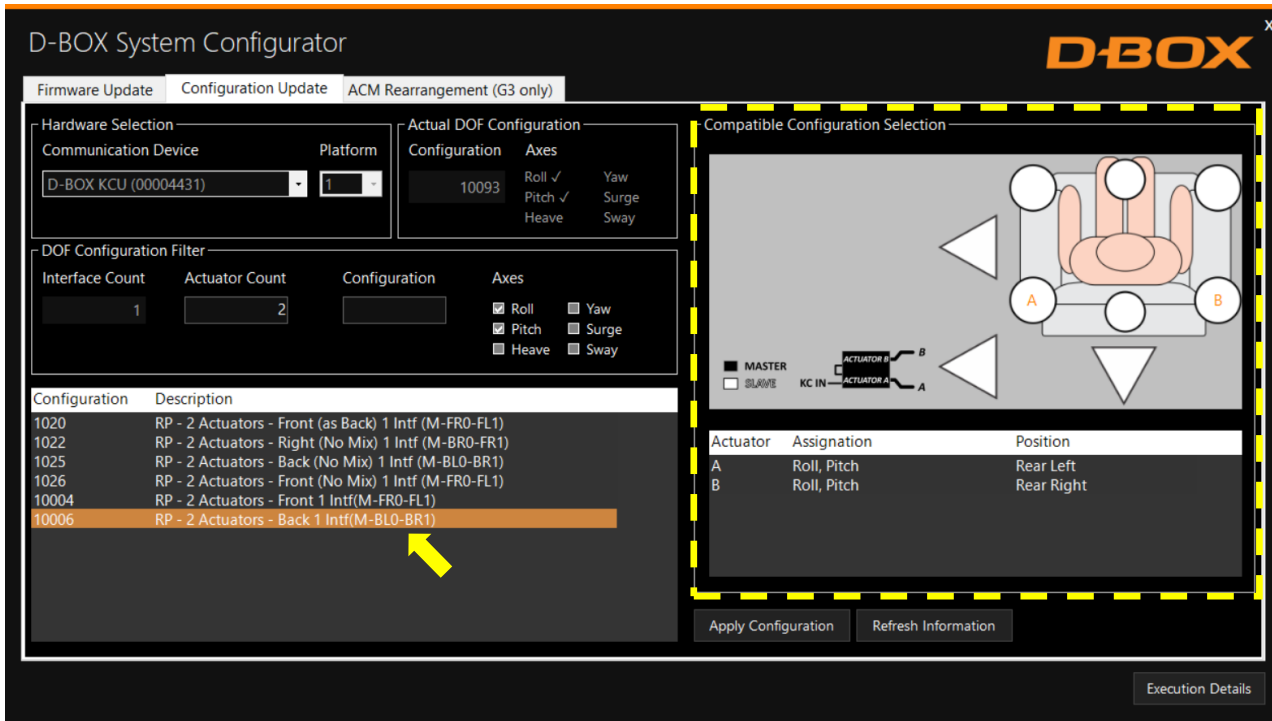
Configuration and Description Table: A table with two columns: 'Configuration' and 'Description'. The table lists several configurations:

| Configuration | Description |
|---------------|-------------------------------------------------------|
| 1020 | RP - 2 Actuators - Front (as Back) 1 Intf (M-FR0-FL1) |
| 1022 | RP - 2 Actuators - Right (No Mix) 1 Intf (M-BR0-FR1) |
| 1025 | RP - 2 Actuators - Back (No Mix) 1 Intf (M-BL0-BR1) |
| 1026 | RP - 2 Actuators - Front (No Mix) 1 Intf (M-FR0-FL1) |
| 10004 | RP - 2 Actuators - Front 1 Intf(M-FR0-FL1) |
| 10006 | RP - 2 Actuators - Back 1 Intf(M-BL0-BR1) |

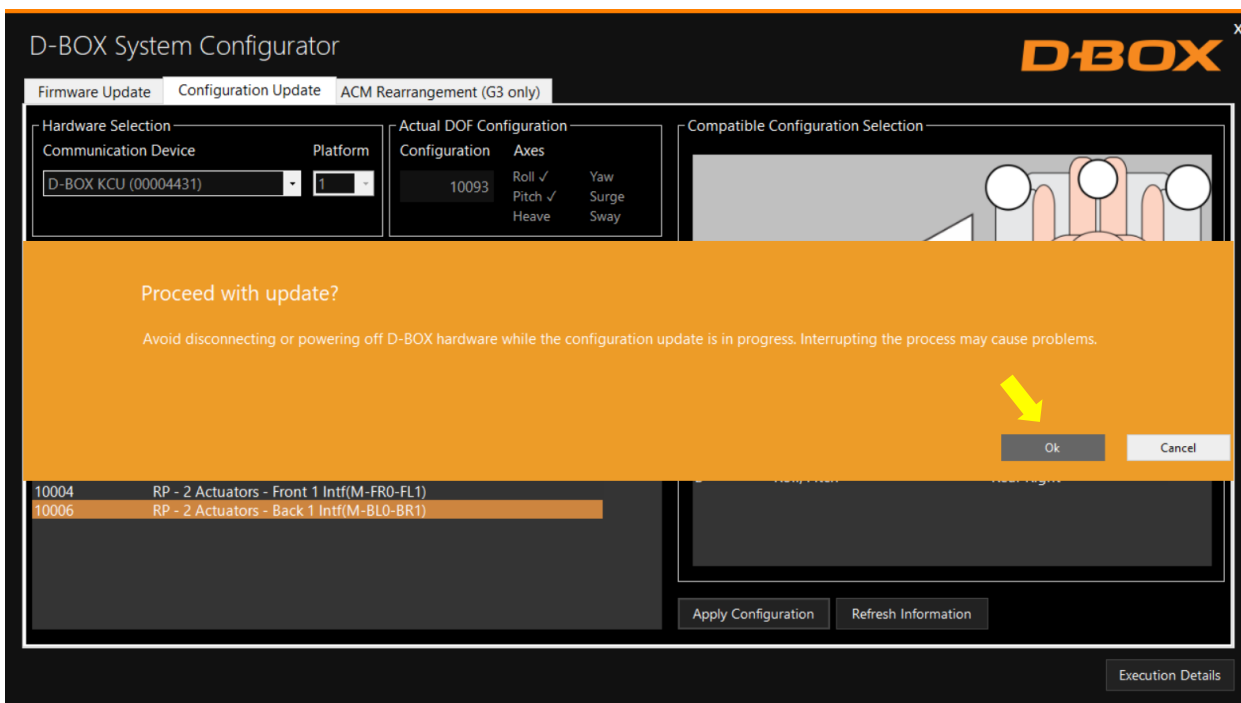
At the bottom right, there are buttons for 'Apply Configuration' and 'Refresh Information'. An 'Execution Details' button is located at the bottom right corner of the interface.

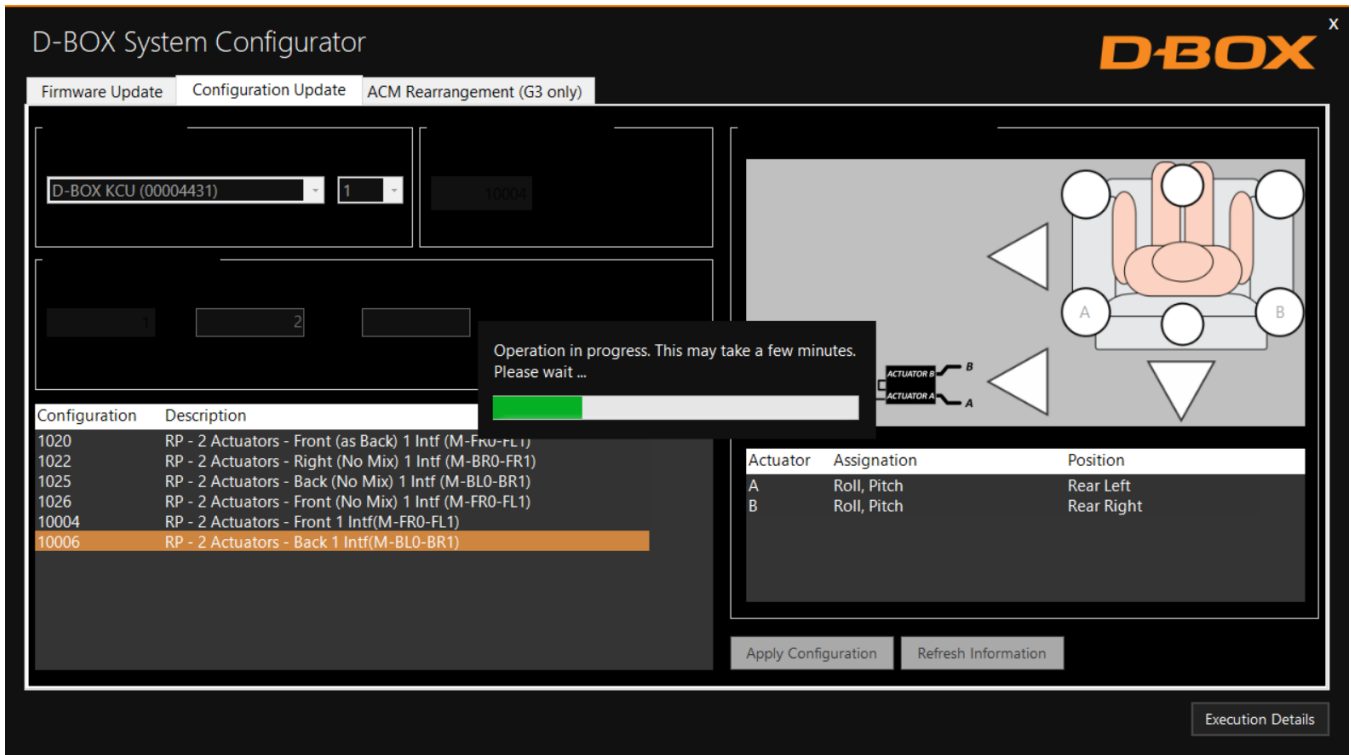
By selecting a configuration, its layout appears in the **Compatible Configuration Selection** box. The layout displays the following elements:

- The ACM connected with their arrangement - Main and Secondary.
- The Haptic Actuator(s) connected, their assigned connection slot (ACM).
- The Haptic Actuator(s) physical positions on the simulator, chair, or platform.

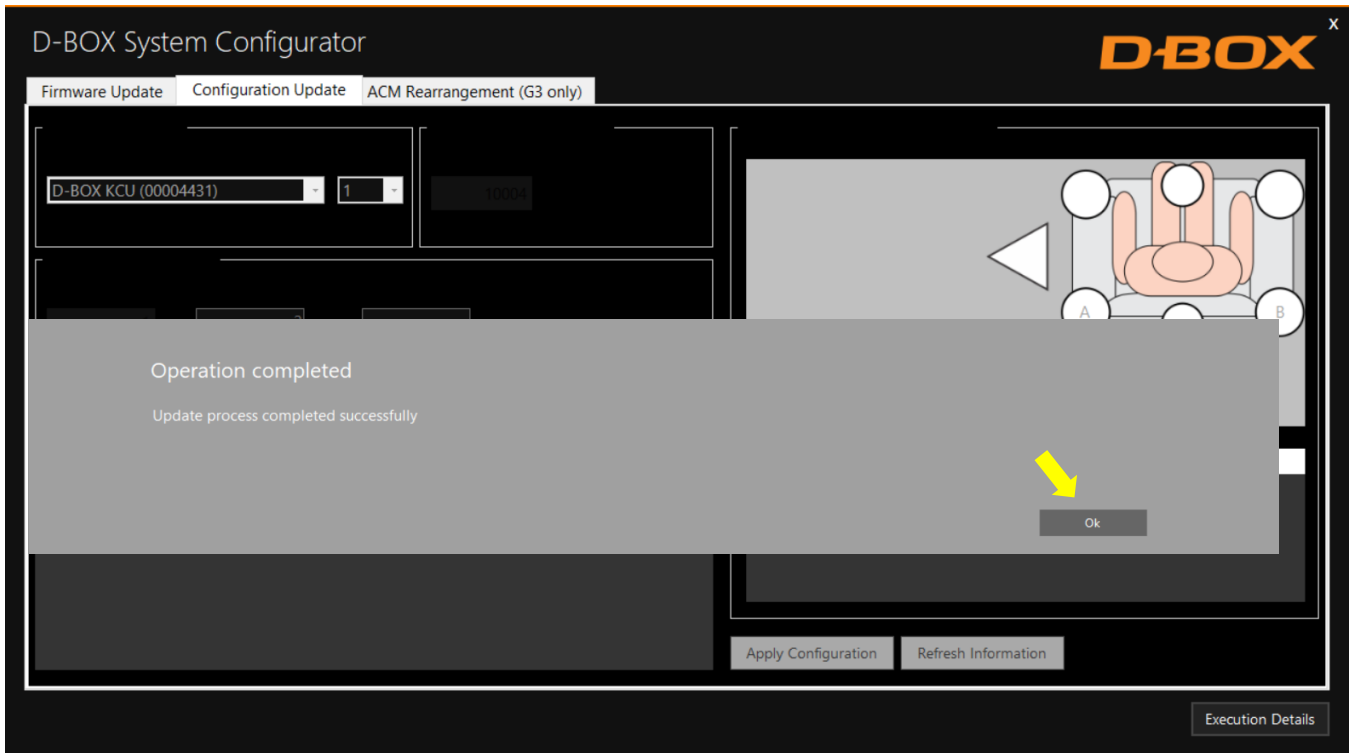


STEP 4 Once the configuration is chosen, click the **Apply Configuration** button to start the configuration update process, then follow the onscreen instructions:





Once the configuration update is complete, the following confirmation window appears. Click **OK**:



5.5 G3 ACM Rearrangement

The **ACM Rearrangement (G3)** tab allows you to change the arrangement of an ACM from Main to Secondary and vice-versa. Please note the following:

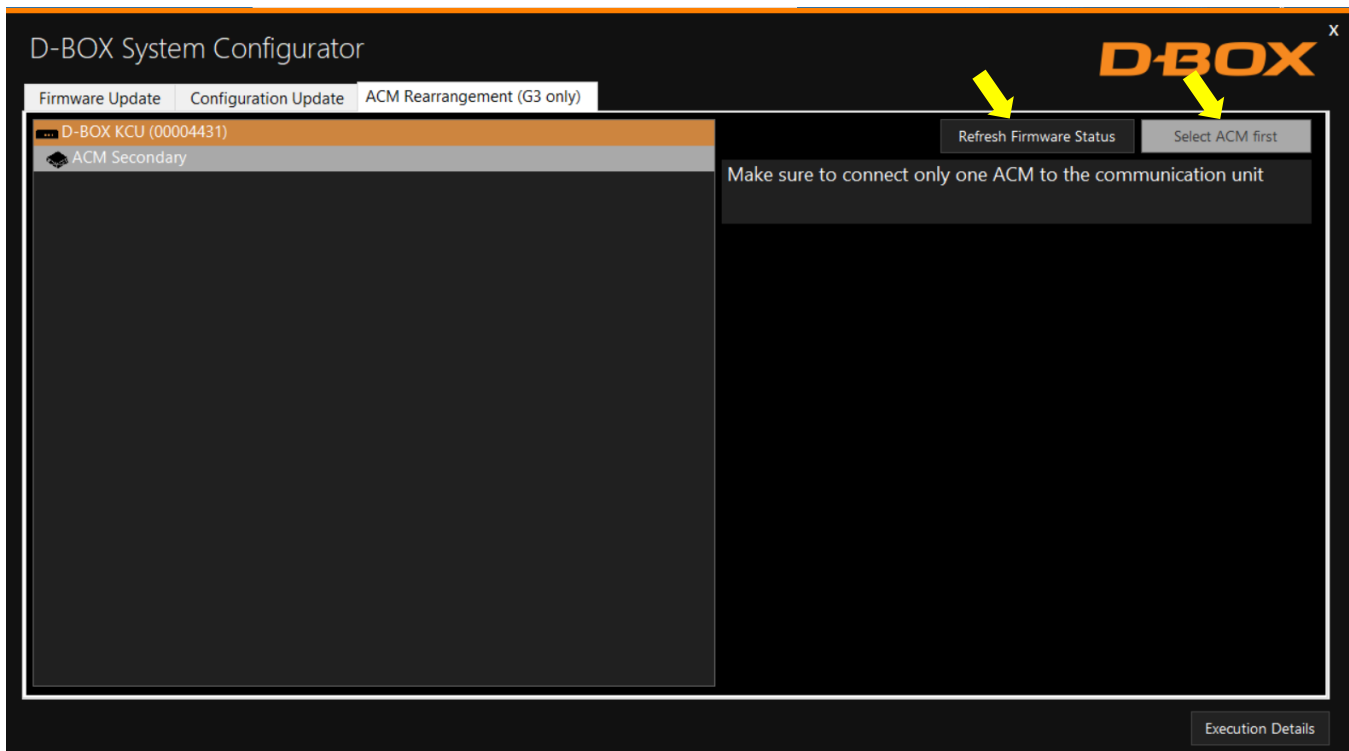
- If an ACM Main is connected, only the "Switch to Secondary ACM" button is available.
- Conversely, if an ACM Secondary is connected, only the "Switch to Main ACM" button is available.

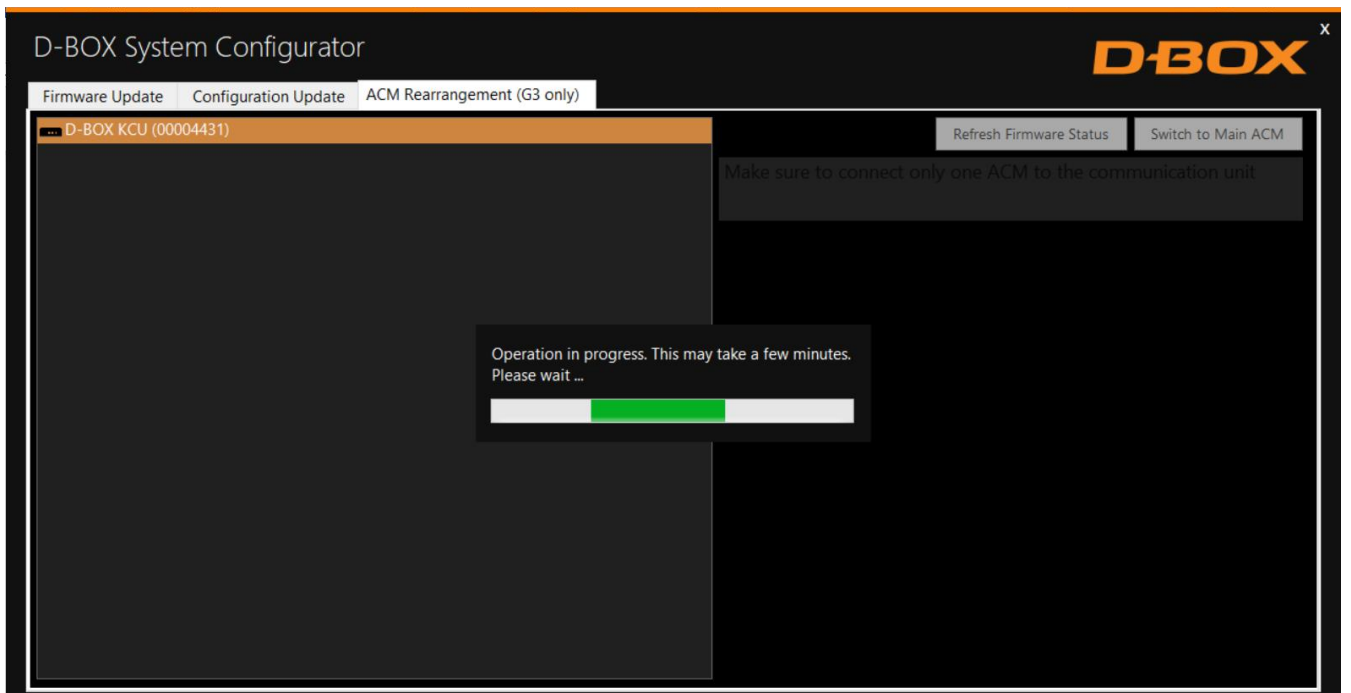
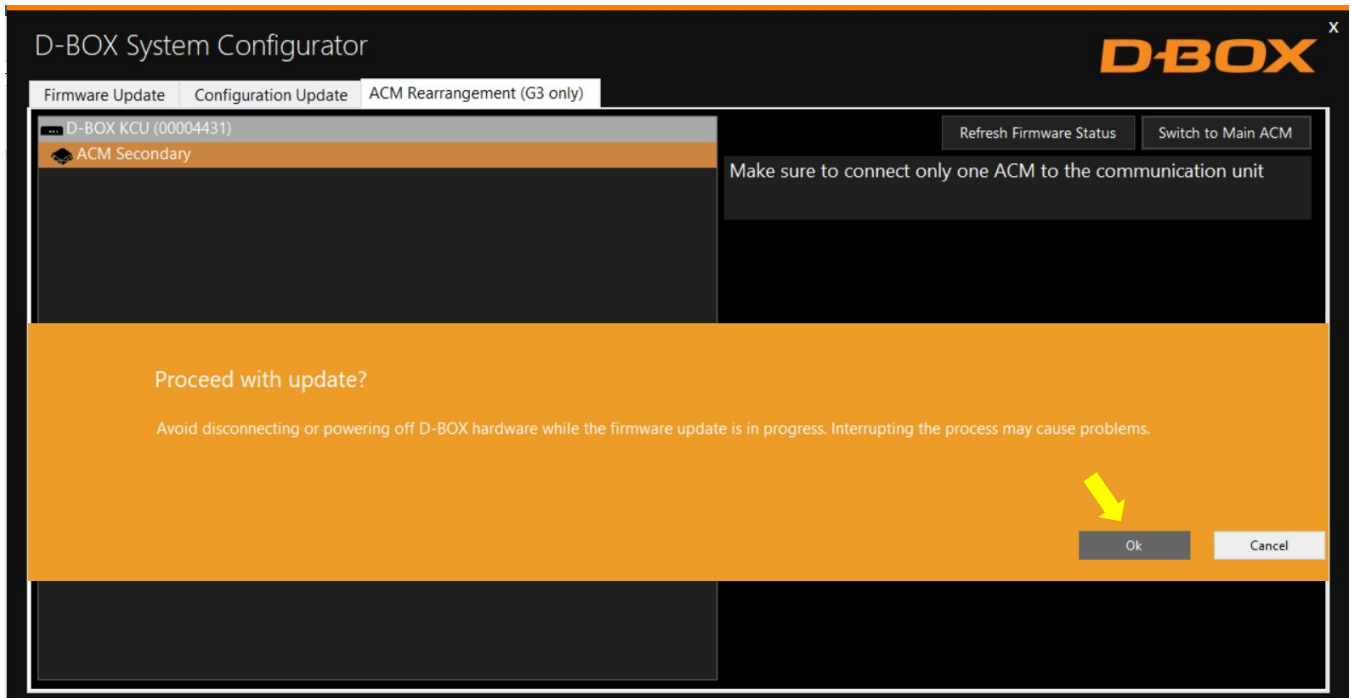


Connect only one (1) ACM at a time to the KCU-1P to perform this operation.

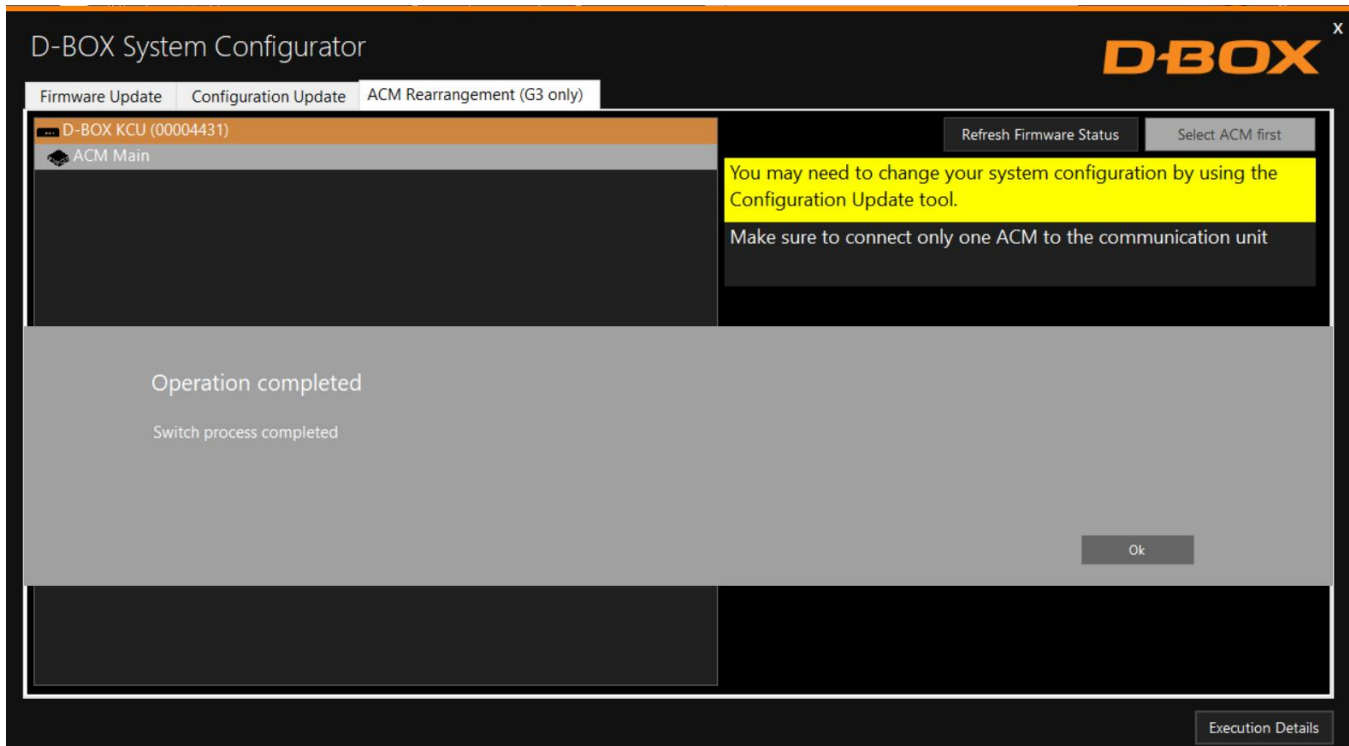
STEP 1: Click on the **Refresh Firmware Status** button to view the actual configuration of the ACM.

STEP 2: Click the Switch to Secondary ACM (or Switch to Main ACM) button if you want to switch your ACM from **Main to Secondary** or vice-versa:






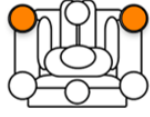

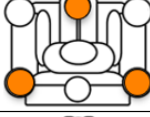

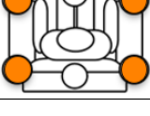
NOTE: You can click the **Execution Details** button at any time to read details about the ongoing operation.



Once the ACM is configured:

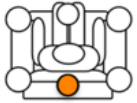












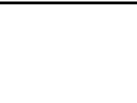
1. Replace the ACM arrangement sticker on top of the ACM.
2. Rearrange the connections between ACMs (see User Guide if needed).
3. Change your system configuration by using the **Configuration Update** tab if necessary.
4. Run your application to check if your haptic system is in good operational order.

APPENDIX A: G5 COMMON CONFIGURATIONS (1 - 3 DOF)

| NB of Actuators | Actuator Position | Config. # | Config. Description | Pictogram Reference |
|-----------------|-------------------|-----------|------------------------------------------------------------------|--------------------------------------------------------------------------------------|
| 1 | Back Center | 1050 | P - 1 Actuator - Back 2 ACMs (M, S-BC0) |  |
| 2 | Front | 10719 | RP - 2 Actuators - Front 3 ACMs (M, S-FR0, S-FLO) |  |
| 2 | Back | 10721 | RP - 2 Actuators - Back 3 ACMs (M, S-BL0, S-BR0) |  |
| 3 | 1 Front / 2 Back | 10731 | RPH - 3 Actuators - 1Front/2Back 4 ACMs (M, S-BL0, S-BR0, S-FC0) |  |
| 3 | 2 Front / 1 Back | 10733 | RPH - 3 Actuators - 2Front/1Back 4 ACMs (M, S-FR0, S-FLO, S-BC0) |  |
| 4 | Front / Rear | 10774 | RPH - 4 Actuators - 5 ACMs (M, S-FR0, S-FLO, S-BL0, S-BR0) |  |

R = Roll, **P** = Pitch, **H** = Heave

APPENDIX B: G2/G3 COMMON CONFIGURATIONS (1 - 3 DOF)

| NB of Actuators | NB of ACMs | Actuator Position | Config. # | Config. Description | Pictogram Reference |
|-----------------|------------|-------------------|-----------|---------------------------------------------------------------|---------------------------------------------------------------------------------------|
| 1 | 1 | Back Center | 1028 | P - 1 Actuator - Back 1 ACM (M-BC1) |  |
| 2 | 1 | Front | 10004 | RP - 2 Actuators - Front 1 ACM (M-FR0-FL1) |  |
| 2 | 2 | Front | 10005 | RP - 2 Actuators - Front 2 ACMs (M-FR1, S-FL1) |  |
| 2 | 1 | Back | 10006 | RP - 2 Actuators - Back 1 ACM (M-BL0-BR1) |  |
| 2 | 2 | Back | 10007 | RP - 2 Actuators - Back 2 ACMs (M-BL1, S-BR1) |  |
| 3 | 1 | 1 Front / 2 Back | 10022 | RPH - 3 Actuators - 1Front/2Back 1 ACM (M-BL0-FC1-BR2) |  |
| 3 | 2 | 1 Front / 2 Back | 10023 | RPH - 3 Actuators - 1Front/2Back 2 ACMs (M-BL0-BR1, S-FC1) |  |
| 3 | 3 | 1 Front / 2 Back | 10024 | RPH - 3 Actuators - 1Front/2Back 3 ACMs (M-BL1, S-BR1, S-FC1) |  |
| 3 | 1 | 2 Front / 1 Back | 10025 | RPH - 3 Actuators - 2Front/1Back 1 ACM (M-FR0-BC1-FL2) |  |
| 3 | 2 | 2 Front / 1 Back | 10026 | RPH - 3 Actuators - 2Front/1Back 2 ACMs (M-FR0-FL1, S-BC1) |  |
| 3 | 3 | 2 Front / 1 Rear | 10027 | RPH - 3 Actuators - 2Front/1Back 3 ACMs (M-FR1, S-FL1, S-BC1) |  |
| 4 | 2 | Front / Rear | 10093 | RPH - 4 Actuators - Front/Back 2 ACMs (M-FR0-FL1, S-BL0-BR1) |  |
| 4 | 2 | Left / Right | 10233 | RPH - 4 Actuators - Left/Right 2 ACMs (M-FLO-BL1, S-BRO-FR1) |  |
| 4 | 4 | - | 10235 | RPH - 4 Actuators - 4 ACMs (M-FR1, S-FL1, S-BL1, S-BR1) |  |

R = Roll, P = Pitch, H = Heave