

DISCOVER THE HAPTISYNC HUB, OUR HOME ENTERTAINMENT MOTION CONTROLLER, WHICH DELIVERS OUR UNIQUE AND IMMERSIVE HOME CINEMATIC EXPERIENCE IN A MORE SIMPLISTIC, USER-FRIENDLY, AND STYLISH FASHION!

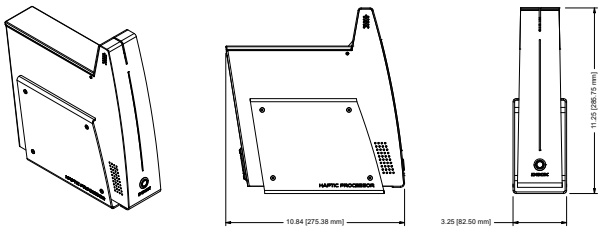
## FEATURES

- Over 2500 HaptiCode tracks including movies, series, music and alternative immersive content.
- Integrated sound sensor automatically synchronises on-screen content with your D-BOX haptic seat.
- Audio line-in connection.
- Can operate and synchronise up to 20 haptic seats.
- Seamlessly controlled by the new D-BOX HaptiSync app for a fully customized experience.
- Compatible with previous haptic systems using an HEMC (extra components may be required).

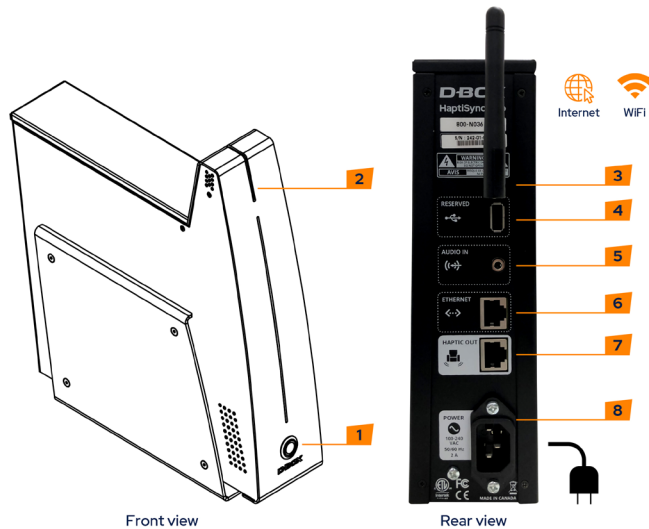


## TECHNICAL SPECIFICATIONS

POWER REQUIREMENTS:	Auto-Ranging 100-240VAC (50/60 Hz), 2A
NETWORK CONNECTION:	10/100 Ethernet or 2.4GHz 802.11n Wireless (Single antenna)
HAPTIC OUTPUT:	KineChain via RJ45 Shielded port
AUDIO INPUT:	Audio jack 1/8 (3.5 mm)
COMPATIBLE AUTOMATION PROTOCOLS:	UDP & TCP/IP
DIMENSIONS:	82.50 x 275.38 x 285.75 mm (3.25 x 10.84 x 11.25")
WEIGHT	2.9 kg (6.4 lbs)
STANDARD OPERATING TEMPERATURE RANGE:	5°C – 40°C (41°F – 104°F)

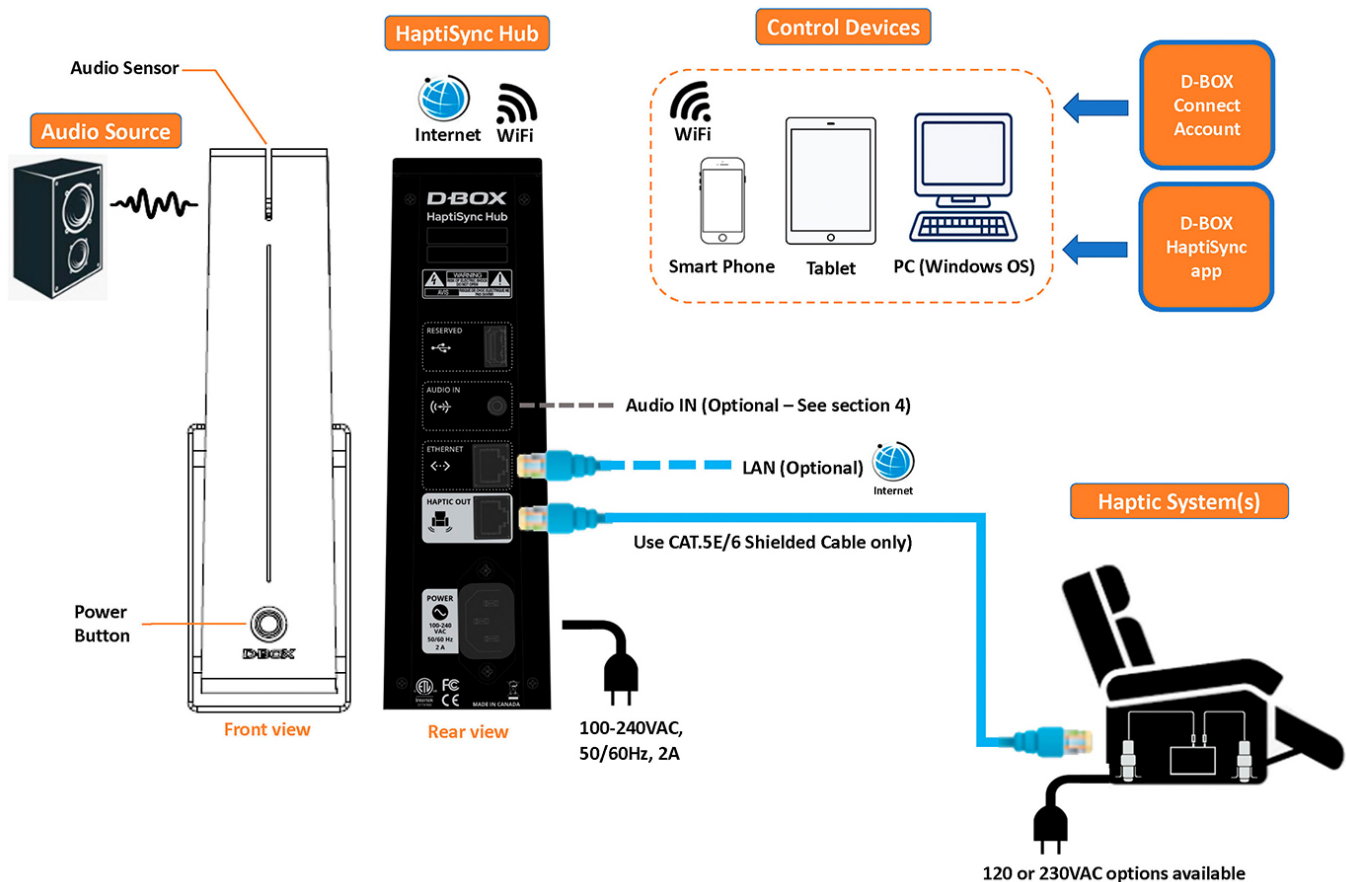


### HAPTISYNC HUB PART NAMES & FUNCTIONS:



- 1 Power Operation Button**  
Used to turn on the power of the HaptiSync Hub.
- 2 Integrated Sound Sensor**  
Used to sense the audio of the movie. (Default Setting)
- 3 External Antenna**  
Used for Wi-Fi Communication
- 4 USB (Reserved)**  
Not used.
- 5 AUDIO IN**  
Used to connect a 3.5mm analog stereo audio source.  
**Not required when using the integrated sound sensor feature.**
- 6 ETHERNET**  
Used to connect a LAN cable when connecting to a wired LAN network. **Not required when using Wi-Fi.**
- 7 HAPTIC OUT**  
Used to connect to a D-BOX HaptiSync System using a **Shielded CAT.5E or 6E** cable.
- 8 AC Inlet (100-240VAC, 50/60Hz, 2A)**  
Used to connect the power cord.

### HAPTISYNC HUB TOPOLOGY:



See the HaptiSync System User Manual for detailed diagrams.