



# USER MANUAL

RSEAT HAPTIC FRAME

# RSEAT HF-L4



PLEASE READ FIRST  
15 MINUTES



ASSEMBLY TIME  
10 MINUTES

# TABLE OF CONTENTS

**1** **WARNING**

---

**2** **SPECIFICATIONS**

---

**3** **PARTS / TOOL KIT / HARDWARE**

---

**4** **UNPACKING AND ASSEMBLY**

---

**5** **SIM RIG SETUP**

---

**6** **HOME CINEMA SETUP / D-BOX PLUS PORTAL**

---

**7** **CONNECTION / D-BOX SOFTWARE**

---

# WARNING

This document contains important safety regulations. Any non-conforming use may result in personal injury or mechanical damage. Please read this user manual carefully before use as it provides key information about safety, use, assembly and maintenance of the Haptic Frame.



This D-BOX Haptic System may be harmful to women who are pregnant. Please consult your physician before using this D-BOX Haptic System



This D-BOX Haptic System may be harmful to persons with heart conditions, the elderly, or those with other preexisting medical conditions. All such persons should consult their physicians before using this D-BOX Haptic System.



Use of this D-BOX Haptic System is not recommended for children under the age of ten years old without adult supervision. Owners and/or users of this D-BOX Haptic System should consult and comply with the user guide enclosed



Use of this D-BOX Haptic System is a risk to hands. Do not put hands underneath the frame. This may lead to serious injury.



Use of this D-BOX Haptic System is a risk to feet. Do not put feet underneath the frame. This may lead to serious injury.



Use of hot liquids in the vicinity of this DBOX Haptic System should always be avoided to prevent spillage which could cause serious injuries to the user.



Do not use this device near water. Only clean the device with a dry cloth.



Do not install near any heat sources such as radiators, heat registers, stoves or any other appliances (including amplifiers).



Unplug this device during electrical storms or when unused for long periods of time.



Protect all the cables (USB, power, etc.) from being walked on or pinched, particularly at the ends.



Refer all servicing to qualified personnel. Servicing is required when the device has been damaged in any way. For example: if liquid has been spilled or objects have fallen onto it, if it has been exposed to rain or moisture, if it does not operate normally or, if it has been dropped.

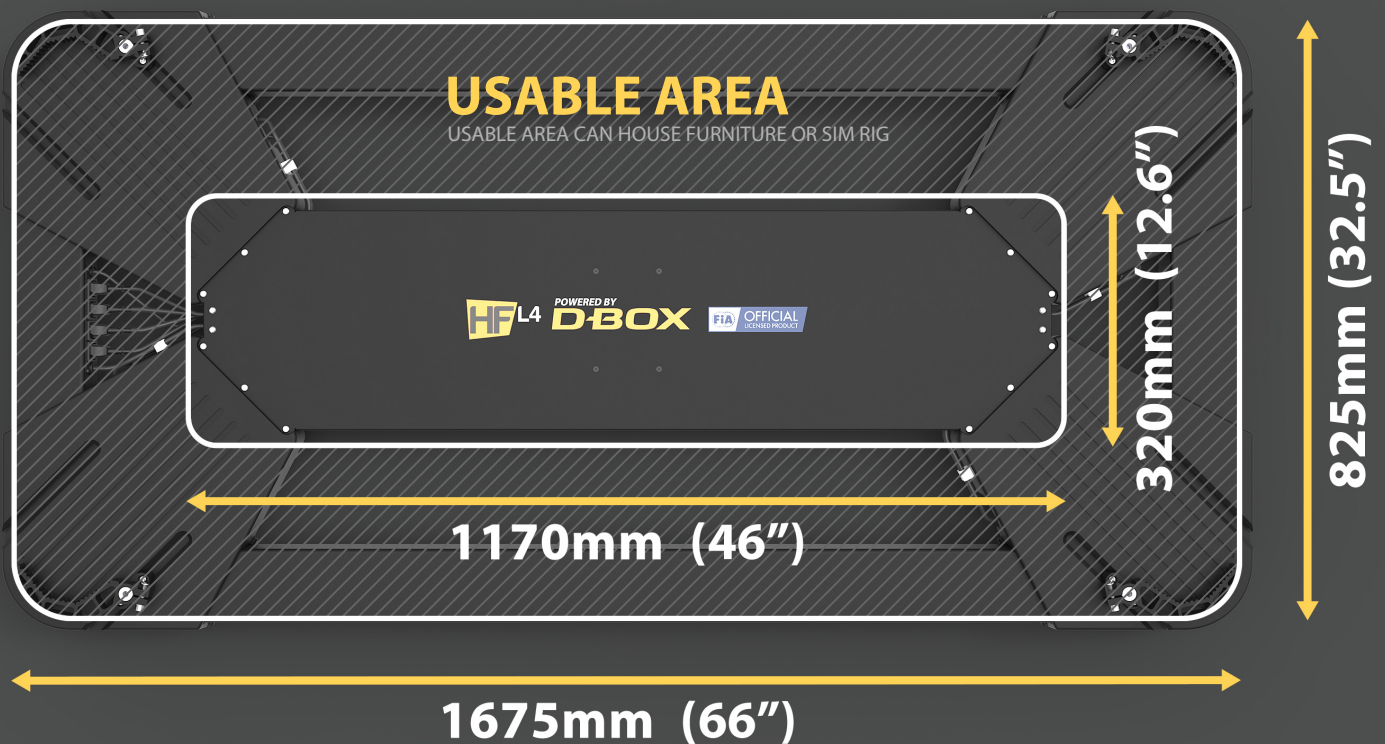
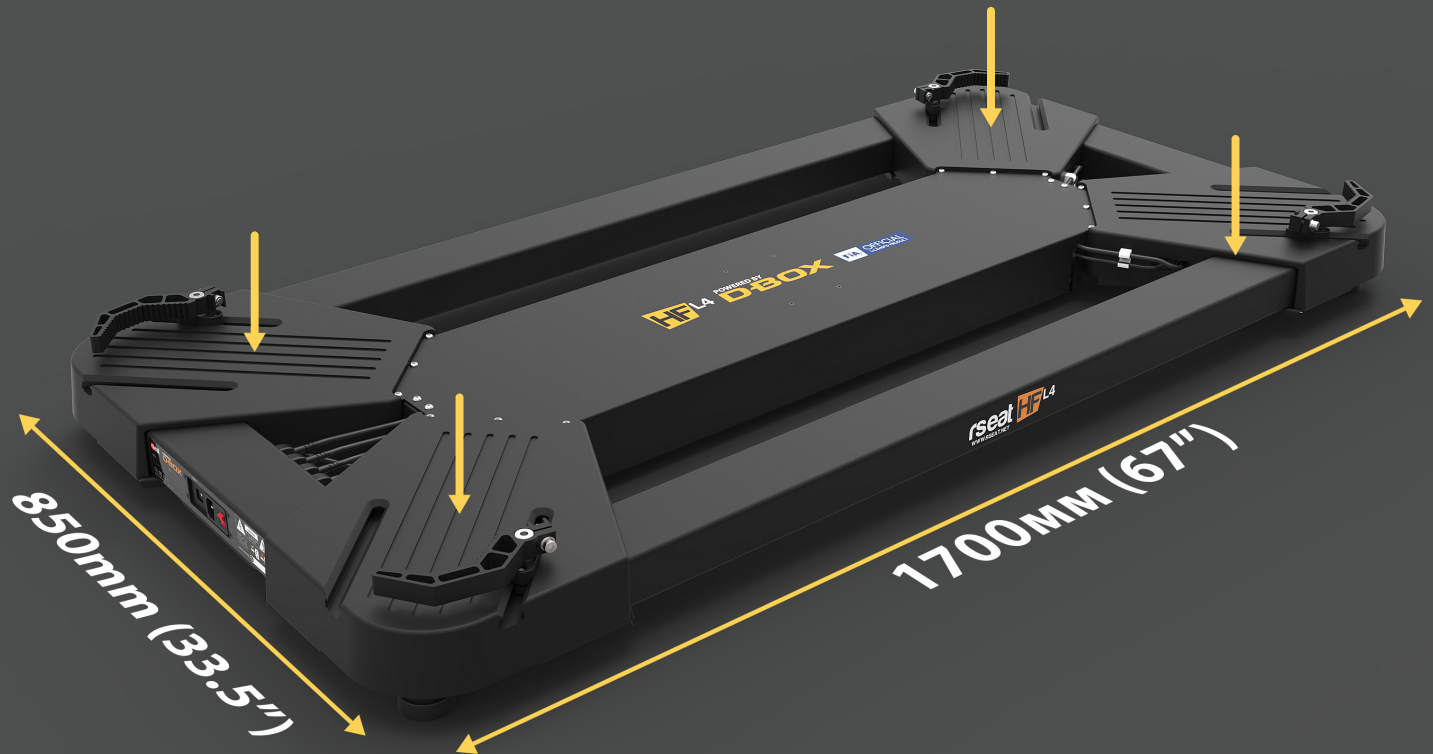


Do not exceed the maximum load capacity of the RSEAT Haptic Frame platform of 400kg (880lbs).

# SPECIFICATIONS

**MAX LOAD 400KG (880LBS)**

MAXIMUM LOAD INCLUDE USER(S) AND EQUIPMENT





# PARTS / TOOL KIT / HARDWARE

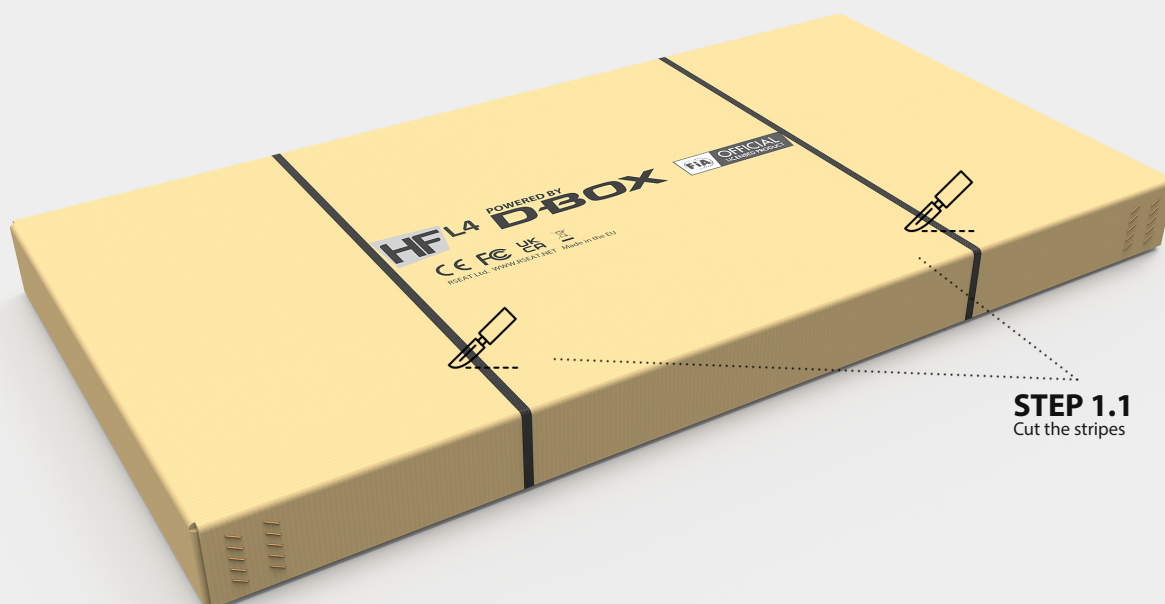
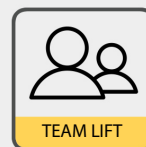


- 1 ▶ RSEAT HF-L4 Haptic Frame main assembly. Factory assembled.
- 2 ▶ 4xMounting bracket bottom support.
- 3 ▶ 4xMounting bracket v1. For sofa and furniture mounting.
- 4 ▶ 4xMounting bracket v2. For Aluminum extrusion sim racing chassis. Include bolts 4xM8x16mm, 8xM6x30mm, 4xT-Slot Nut Slot 10 – M8, two left and right brackets v2.
- 5 ▶ 4x Mounting bracket v3. For round or square tube based sim racing chassis.
- 6 ▶ Adjustment Hex key wrenches. 1x5mm, 1x6mm
- 7 ▶ USB communication cable (from PC to RSEAT HF-L4) , Power cable (110v-230v) to RSEAT HF-L4 haptic frame.

# UNPACKING AND ASSEMBLY

## STEP 1

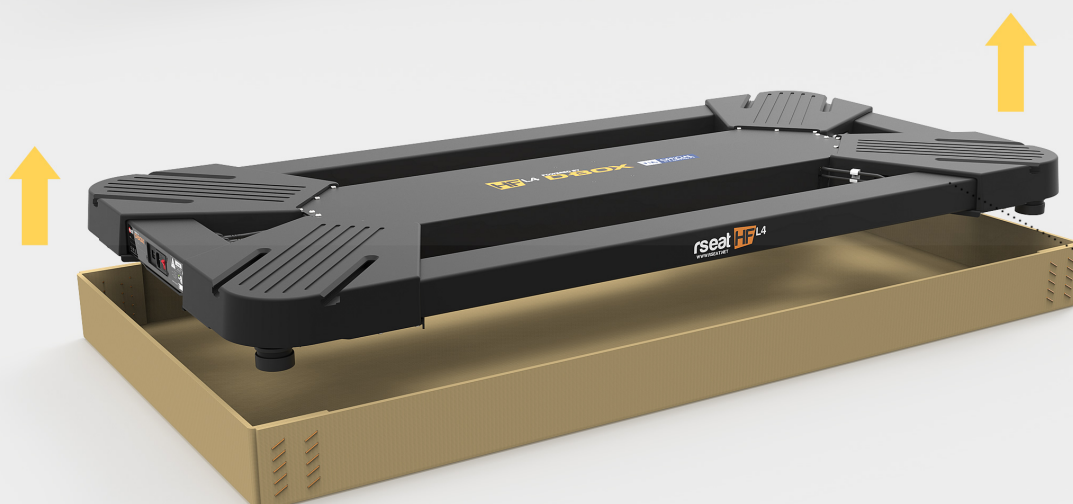
REQUIRE AT LEAST TWO PERSONS TO BE PRESENT DURING LIFTING OPERATIONS



**STEP 1.1**  
Cut the stripes



**STEP 1.2**  
Remove the box cover



**STEP 1.3**  
Remove all the additional packaging and lift the chassis.

## STEP 2

INSTALL BRACKET SUPPORT (PART2) ON ALL FOUR SIDES.

### STEP 2.1

BRACKET SUPPORT (part2) installation.  
Slide the bracket support in to the T-Channel.

### STEP 2.2

Adjust and fix the BRACKET SUPPORT  
using the 5mm HEX key provided.  
Tight both 6mm bolts to fix the bracket  
support.

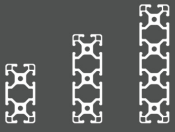
30mm / 1.2 inch



# SIM RIG SETUP - EXTRUSION

## H80 / H120 / H160

EXTRUSION BASED CHASSIS MIN / MAX BASE PROFILE HEIGHT SUPPORTED



## CHASSIS DIMENSIONS

EXTRUSION BASED CHASSIS MIN / MAX LENGHT / WIDTH SUPPORTED

W- MIN 500mm(20") / MAX 660mm (26")



L- MIN 1250mm(49") / MAX 1700mm (67")



# STEP 1

PUT SIM RIG ON THE RSEAT HF-L4 CHASSIS. TEAM LIFT REQUIRED.



## STEP 1.1

4 x Bracket V2 (part 4) required (two left and right brackets included). Use M6x30mm bolts provided. Adjust with 5mm HEX key.



## STEP 1.2

Install M8 T-Slot nut provided on each corner of the sim rig.

## STEP 1.3

Slide the bracket v2 assembly in to the T-Channel.



## STEP 1.4

Adjust and fix the BRACKET v2 Assembly using the 5mm HEX key provided. Tight both 6mm bolts to fix the bracket support. Fix the bracket v2 assembly to sim rig chassis using M8x16 bolts provided and 6mm HEX key. Make sure to tight all fasteners before use.

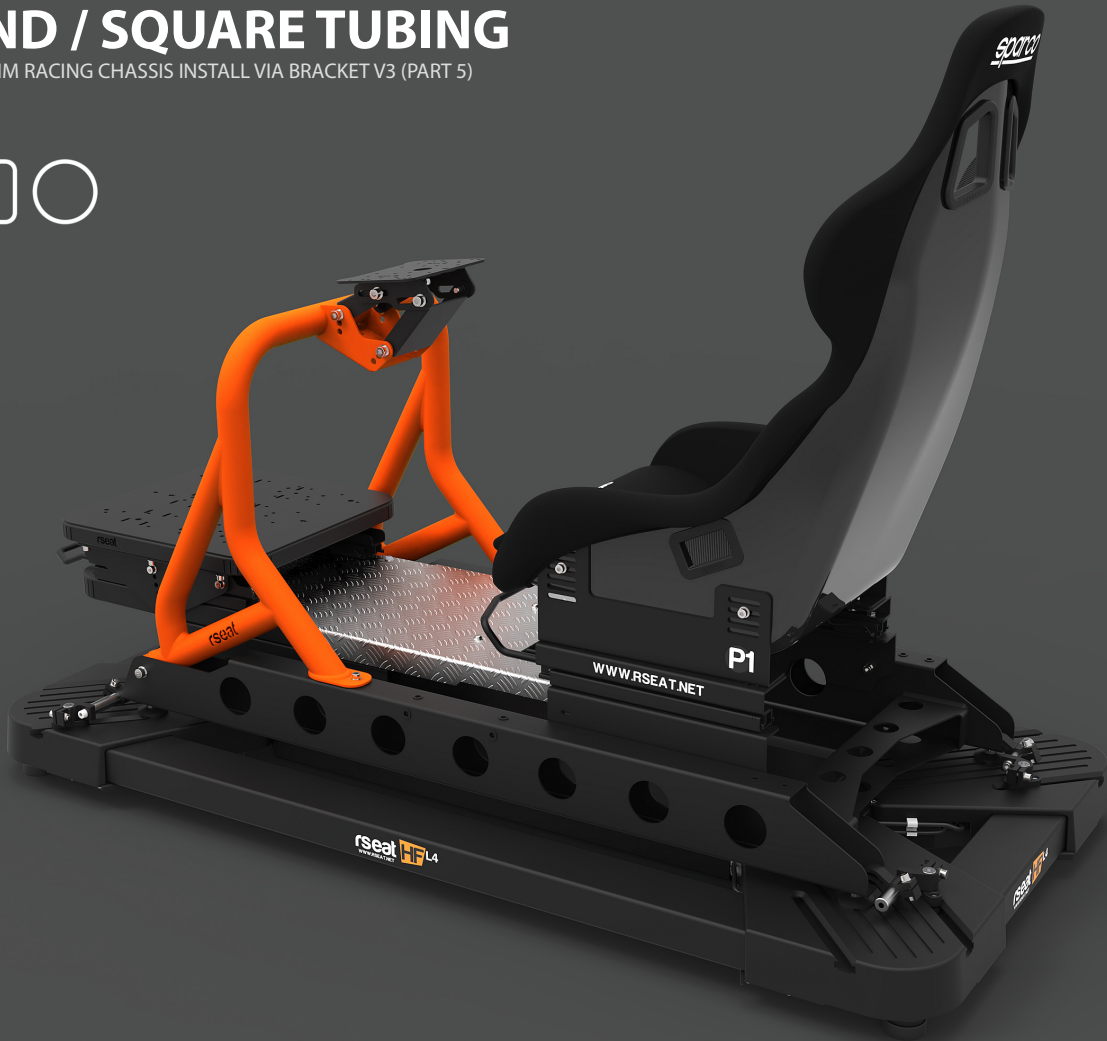




# SIM RIG SETUP - TUBING

## ROUND / SQUARE TUBING

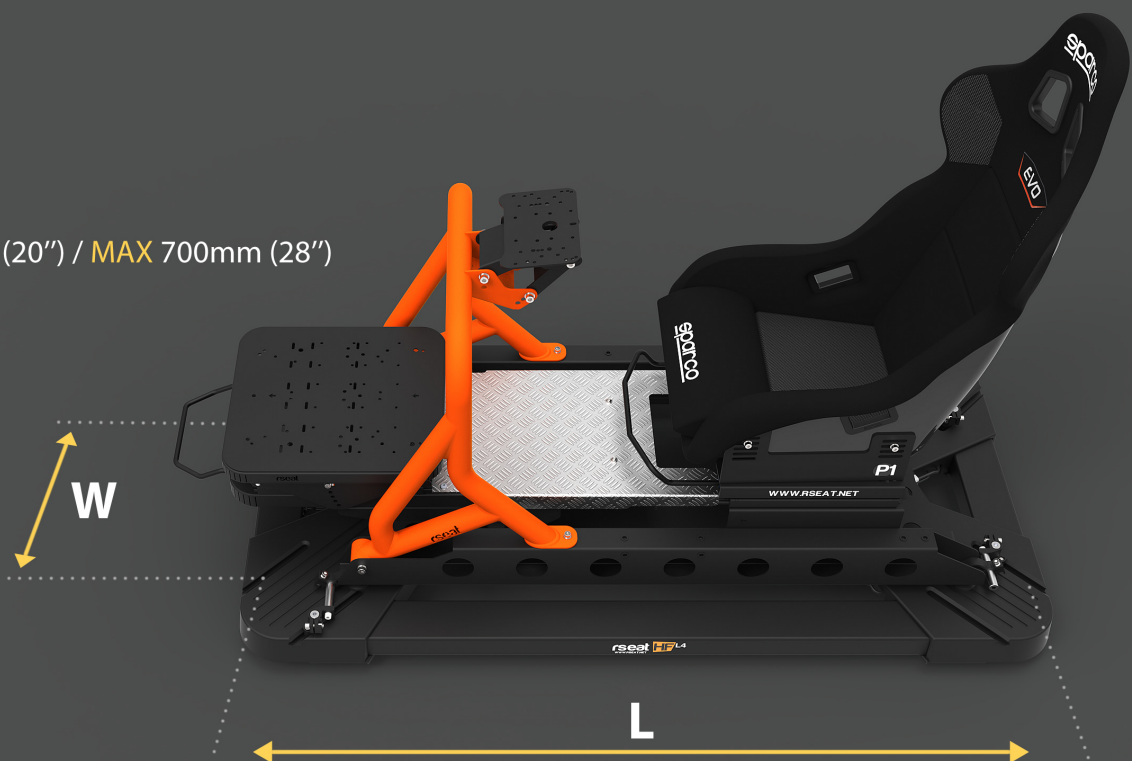
TUBE BASED SIM RACING CHASSIS INSTALL VIA BRACKET V3 (PART 5)



## CHASSIS DIMENSIONS

TUBE BASED CHASSIS MIN / MAX LENGHT / WIDTH SUPPORTED

W- MIN 500mm(20") / MAX 700mm (28")



L- MIN 1150mm(45") / MAX 1700mm (67")

# STEP 1

PUT SIM RIG ON THE RSEAT HF-L4 CHASSIS. TEAM LIFT REQUIRED.



## STEP 1.1

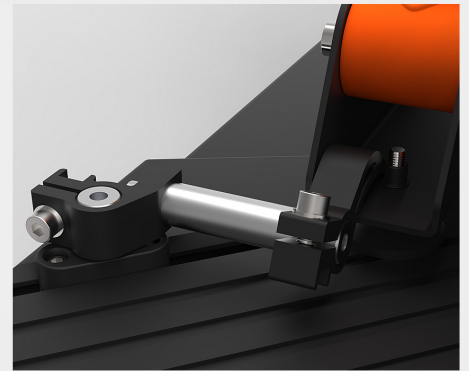
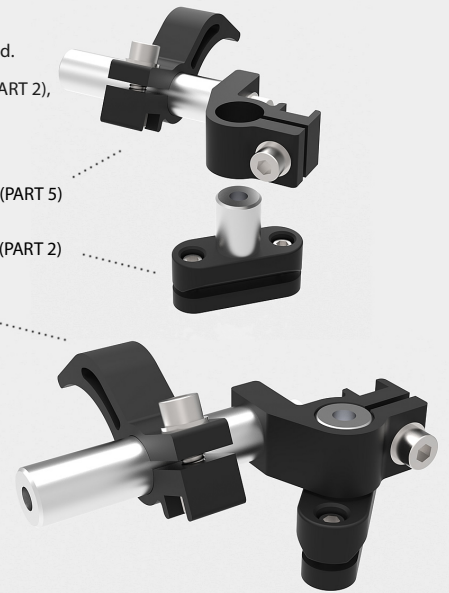
4 x Bracket v3 (PART 5) required.

**IMPORTANT!**  
Tighten BRACKET SUPPORT (PART 2),  
before securing Bracket V3.  
Adjust with 6mm HEX key.

BRACKET v3 (PART 5)

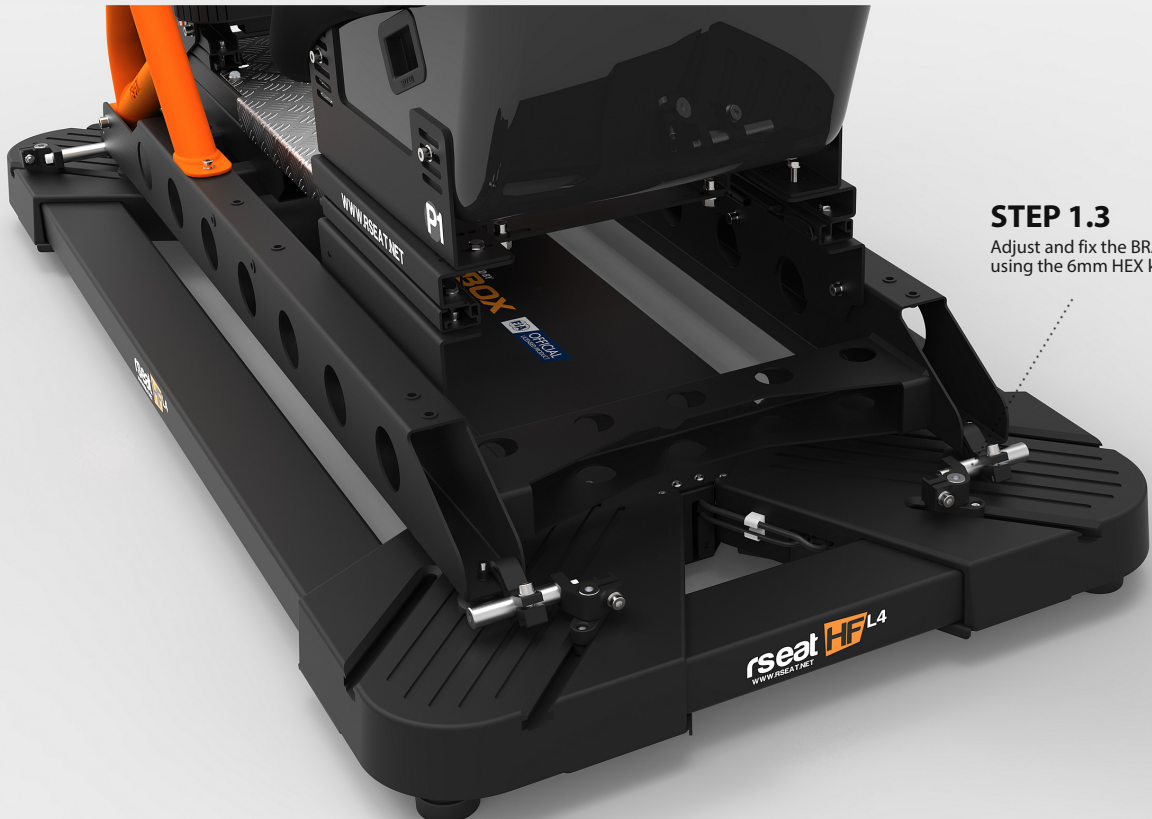
BRACKET SUPPORT (PART 2)

BRACKET v3 assembly



## STEP 1.2

Every sim racing chassis has different mounting approach.  
BRACKET v3 assembly is universal. If you have difficulties  
with the approach and bracket location please contact us.



## STEP 1.3

Adjust and fix the BRACKET v3 Assembly  
using the 6mm HEX key provided.



# HOME CINEMA SETUP - SOFA

## 4D HOME CINEMA

D-BOX Home Entertainment | Feel It All At Home

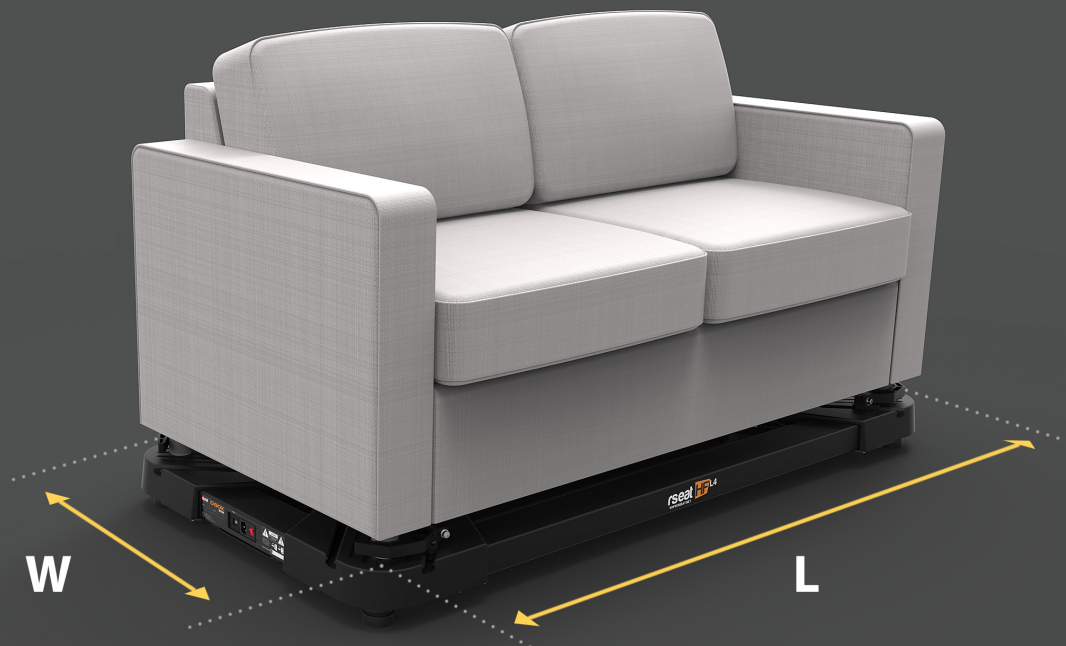


## SOFA DIMENSIONS

DIMENSION FROM LEG TO LEG MIN / MAX LENGTH / WIDTH SUPPORTED

L- MIN 1250mm(49") / MAX 1650mm (65")

W- MIN 500mm(20") / MAX 800mm (32")



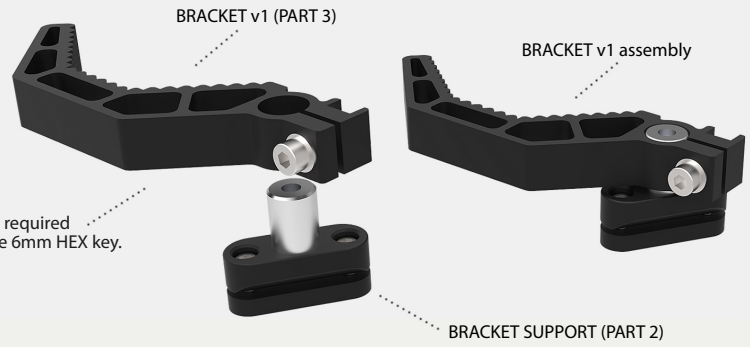
# STEP 1

PUT SIM RIG ON THE RSEAT HF-L4 CHASSIS. TEAM LIFT REQUIRED.



## STEP 1.1

4 x Bracket V1 (part 3) required  
Adjust and fix with the 6mm HEX key.



## STEP 1.2

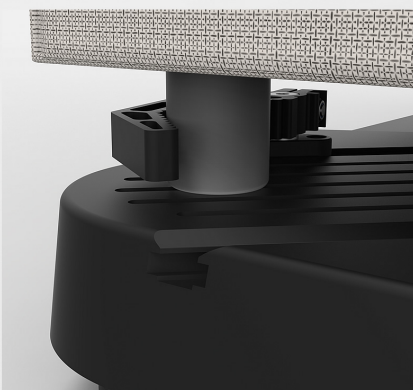
4 x Bracket v1 (PART 3) required.

### IMPORTANT!

Tighten BRACKET SUPPORT (PART 2), before securing Bracket V1.  
Tight both 6mm bolts with 5mm HEX key to fix the bracket support.  
Install 4xBracket v1. Do not tighten Bracket v1 yet.

## STEP 1.3

Place the sofa on RSEAT HF-L4 Haptic Frame. Team Lift Required.

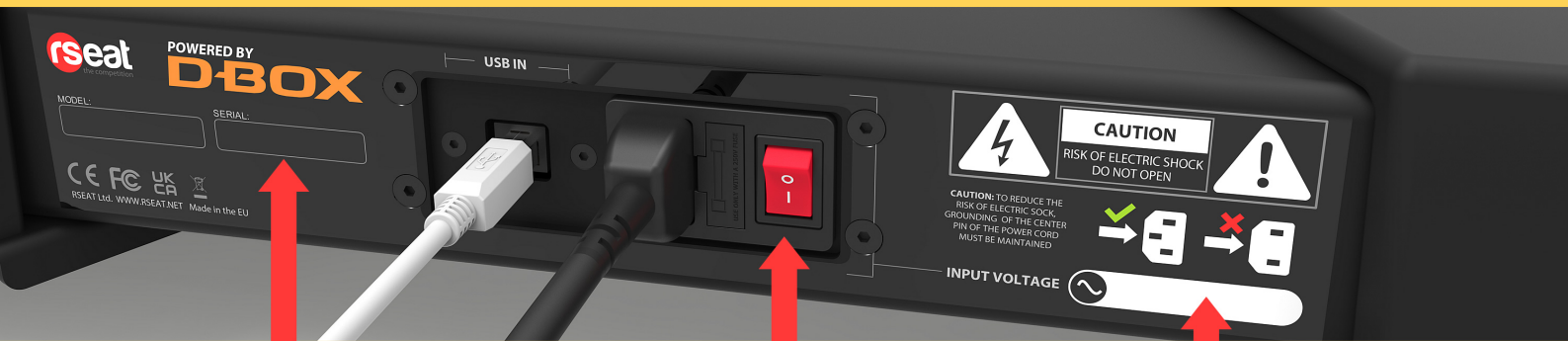


## STEP 1.4

Make sure each leg is secured.  
Tighten Bracket support v1 with 6mm Hex key provided.



# CONNECTION / SOFTWARE



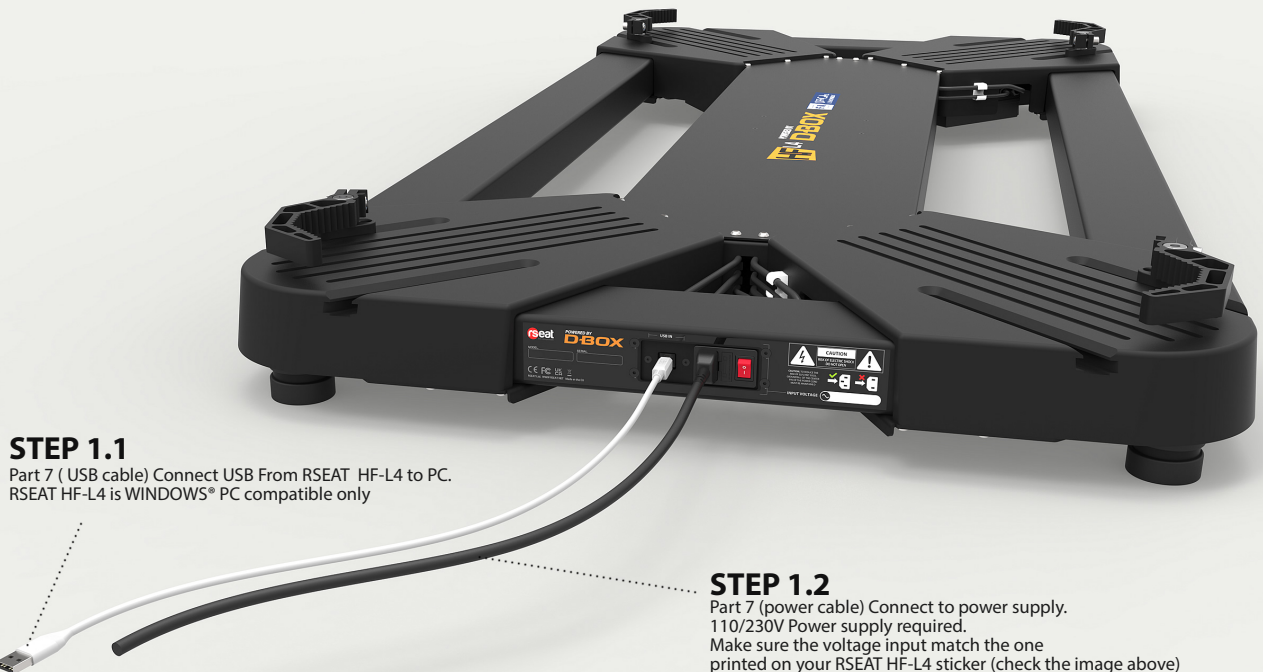
SERIAL NUMBER LOCATION

POWER ON/OFF SWITCH

VOLTAGE INPUT SPECIFICATION

## POWER UP

INSTALL COMMUNICATION AND POWER CABLES TO RSEAT HF-L4



### STEP 1.1

Part 7 ( USB cable) Connect USB From RSEAT HF-L4 to PC.  
RSEAT HF-L4 is WINDOWS® PC compatible only

### STEP 1.2

Part 7 (power cable) Connect to power supply.  
110/230V Power supply required.  
Make sure the voltage input match the one  
printed on your RSEAT HF-L4 sticker (check the image above)

## D-BOX SOFTWARE / DOWNLOADS

DOWNLOAD AND INSTALL D-BOX HAPTIC SOFTWARE

<https://www.d-box.com/en/software-downloads>



# D-BOX PLUS

D-BOX compatible content (movies, television series, games, etc.)



By Joining D-BOX PLUS, you will:



Access the entire list of available D-BOX compatible content (movies, television series, games, etc.) as well as see what's now playing in theaters.



Have access to the latest D-BOX news, VIP events, exclusive content, tips & tricks, and more.



Be an integral part of the D-BOX community by giving feedback and by helping us improve.



Connect with other members.



Collect points and badges to redeem for prizes!

## D-BOX PLUS REGISTRATION

D-BOX compatible content (movies, television series, games, etc.)

[https://dbox.influitive.com/users/sign\\_in](https://dbox.influitive.com/users/sign_in)